

CREC.REAL ING VS GTOS 1996-1999

| CRECIMIENTO REAL DE INGRESOS DE FUNCIONAMIENTO VS GASTOS DE FUNCIONAMIENTO 1996 -1999  |            |             |             |
|--|------------|-------------|-------------|
| MUNICIPIO SOCORRO  |            |             |             |
| CONCEPTO   | 1996 -1997 | 1997 - 1998 | 1998 - 1999 |
| CRECIMIENTO INGRESOS TOTALES FUNCIONAMIENTO<br>CRECIMIENTO REAL - VALORES REEXPRESADOS |            |             |             |
|  | 17,28%     | 10,44%      | -0,04%      |
|  | -13,00%    | -10,61%     | -13,84%     |
|  |            |             |             |
| CONCEPTO   | 1996 -1997 | 1997 - 1998 | 1998 - 1999 |
| CRECIMIENTO GASTOS TOTALES FUNCIONAMIENTO<br>CRECIMIENTO REAL - VALORES REEXPRESADOS   |            |             |             |
|  | 10,55%     | 19,86%      | 5,59%       |
|  | -744%      | 1,15%       | -8,97%      |
|  |            |             |             |

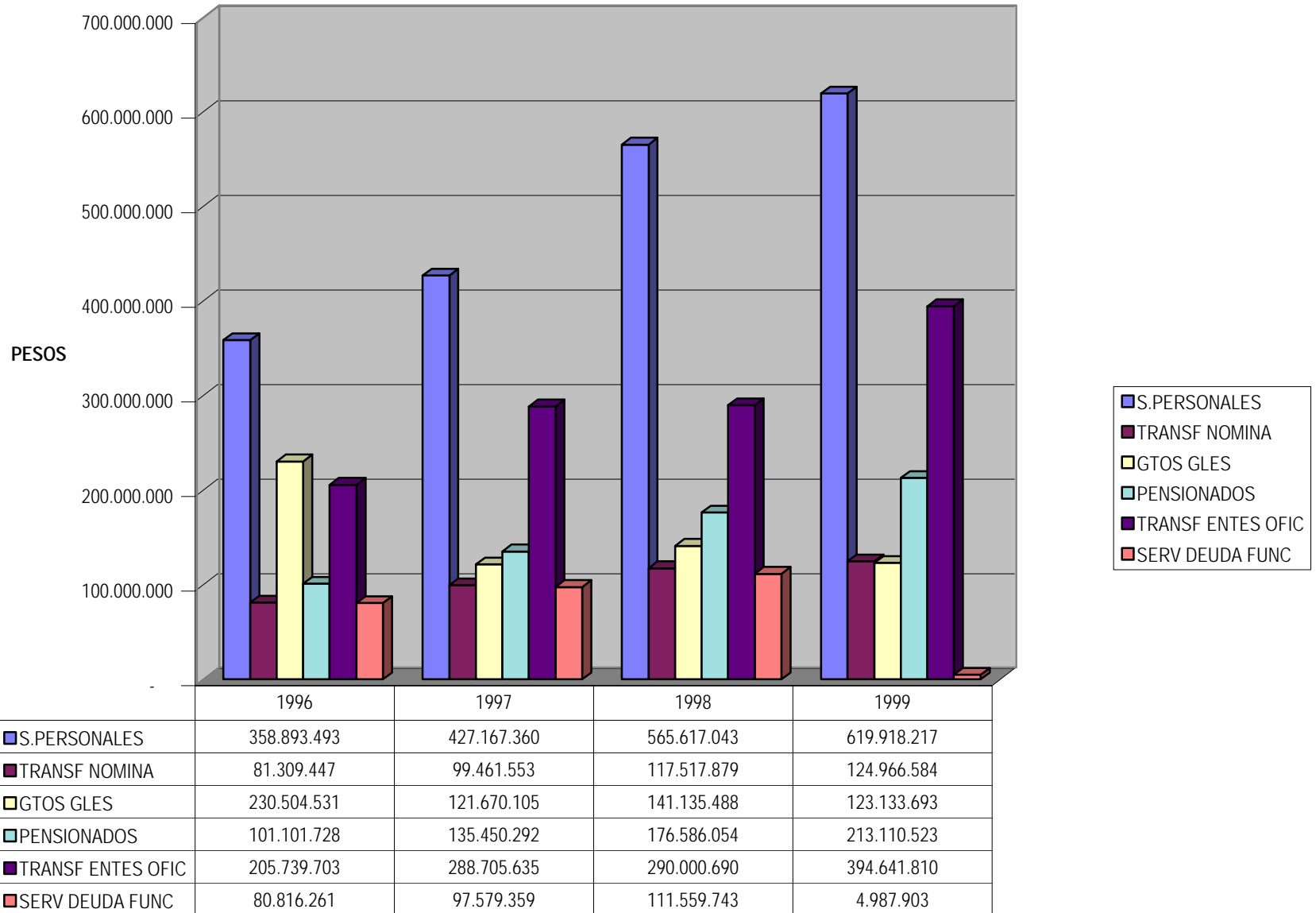
**MUNICIPIO DEL SOCORRO  
PROYECCION DE INGRESOS Y EGRESOS 2000 - 2008**

| ITEM     | CONCEPTO                                    | 1996                 | 1997                 | 1998                 | 1999                 | 2000                 | 2001                   | 2002                   | 2003                   | 2004                   | 2005                   | 2006                   | 2007                   | 2008                   |
|----------|---|----------------------|----------------------|----------------------|----------------------|----------------------|------------------------|------------------------|------------------------|------------------------|------------------------|------------------------|------------------------|------------------------|
|          |   | EJECUTADO            | EJECUTADO            | EJECUTADO            |                      |                      |                        |                        |                        | EJECUTADO              |                        |                        |                        |                        |
| <b>A</b> | <b>INGRESOS CORRIENTES</b>                  | <b>995.367.081</b>   | <b>1.167.355.929</b> | <b>1.289.262.990</b> | <b>1.288.711.812</b> | <b>1.227.131.098</b> | <b>1.262.616.903</b>   | <b>1.325.942.283</b>   | <b>1.392.497.190</b>   | <b>1.462.448.438</b>   | <b>1.535.971.543</b>   | <b>1.613.251.174</b>   | <b>1.694.481.636</b>   | <b>1.779.867.379</b>   |
| <b>1</b> | <b>INGRESOS TRIBUTARIOS</b>                 | <b>539.687.311</b>   | <b>587.830.563</b>   | <b>656.236.871</b>   | <b>714.713.901</b>   | <b>752.879.883</b>   | <b>793.083.395</b>     | <b>835.434.049</b>     | <b>880.046.227</b>     | <b>927.040.895</b>     | <b>976.544.668</b>     | <b>1.028.892.154</b>   | <b>1.083.624.315</b>   | <b>1.141.489.953</b>   |
| 1.1      | PREDIAL UNIFICADO                           | 326.903.621          | 350.550.140          | 361.313.316          | 408.597.927          | 430.416.951          | 453.401.216            | 477.612.341            | 503.117.367            | 529.963.834            | 559.294.071            | 589.097.286            | 619.501.799            | 652.593.161            |
| 1.2      | INDUSTRIA Y COMERCIO                        | 73.717.730           | 88.075.534           | 114.717.604          | 131.664.231          | 138.695.101          | 146.101.419            | 153.903.235            | 162.121.668            | 170.778.965            | 179.898.582            | 189.505.145            | 199.624.720            | 210.284.680            |
| 1.3      | CIRCULACION Y TRANSITO                      | 104.051.081          | 108.360.486          | 127.664.154          | 105.706.852          | 111.351.598          | 117.297.773            | 123.561.474            | 130.159.657            | 137.110.183            | 144.431.866            | 152.144.528            | 160.269.046            | 168.827.413            |
| 1.4      | OTROS TRIBUTARIOS                           | 35.014.879           | 32.844.403           | 52.541.797           | 68.744.991           | 72.415.974           | 76.282.987             | 80.356.498             | 84.647.535             | 89.167.713             | 93.929.269             | 98.945.052             | 104.228.760            | 109.794.576            |
| <b>2</b> | <b>INGRESOS NO TRIBUTARIOS</b>              | <b>226.194.291</b>   | <b>262.278.256</b>   | <b>229.580.917</b>   | <b>220.061.424</b>   | <b>231.812.704</b>   | <b>218.100.259</b>     | <b>229.746.812</b>     | <b>242.015.292</b>     | <b>254.938.909</b>     | <b>268.552.647</b>     | <b>282.893.358</b>     | <b>297.999.863</b>     | <b>313.913.056</b>     |
| 2.1      | TASAS, TARIFAS Y DERECHOS                   | 58.234.659           | 81.010.184           | 71.798.080           | 141.774.956          | 149.345.739          | 157.320.801            | 165.721.732            | 174.751.273            | 183.893.379            | 193.713.285            | 214.954.249            | 226.432.806            | 236.432.806            |
| 2.2      | MULTAS                                      | 14.183.371           | 19.586.040           | 16.353.463           | 17.704.297           | 18.649.798           | 19.645.000             | 20.694.675             | 21.799.771             | 22.963.879             | 24.190.150             | 25.481.904             | 26.942.637             | 28.276.034             |
| 2.3      | RENTAS CONTRACTUALES                        | 10.097.291           | 9.351.402            | 5.435.150            | 5.564.205            | 5.861.334            | 6.174.329              | 6.504.038              | 6.851.354              | 7.217.216              | 7.602.615              | 8.008.596              | 8.436.254              | 8.886.750              |
| 2.4      | RENDIMIENTOS FINANCIEROS                    | 71.181.739           | 62.460.032           | 37.817.927           | 31.504.960           | 33.187.395           | 34.959.628             | 36.828.367             | 38.792.895             | 40.864.436             | 43.046.596             | 45.345.285             | 47.766.723             | 50.317.466             |
| 2.5      | VENTA DE SERVICIOS                          | 72.497.230           | 89.870.598           | 98.176.298           | 23.513.006           | 24.768.601           | -                      | -                      | -                      | -                      | -                      | -                      | -                      | -                      |
| 2.6      | OTROS NO TRIBUTARIOS                        | -                    | -                    | -                    | -                    | -                    | -                      | -                      | -                      | -                      | -                      | -                      | -                      | -                      |
| <b>3</b> | <b>TRANSFERENCIAS CORRIENTES</b>            | <b>229.485.479</b>   | <b>317.247.110</b>   | <b>403.445.202</b>   | <b>353.936.487</b>   | <b>242.438.770</b>   | <b>251.433.249</b>     | <b>260.761.422</b>     | <b>270.435.671</b>     | <b>280.468.834</b>     | <b>290.874.228</b>     | <b>301.665.662</b>     | <b>312.857.458</b>     | <b>324.464.470</b>     |
| 3.1      | DEL GOBIERNO NACIONAL                       | 229.485.479          | 317.247.110          | 403.445.202          | 353.936.487          | 242.438.770          | 251.433.249            | 260.761.422            | 270.435.671            | 280.468.834            | 290.874.228            | 301.665.662            | 312.857.458            | 324.464.470            |
| 3.1.1    | PARTICIPACION INGRESOS CTES DE LA NACION    | 229.485.479          | 317.247.110          | 403.445.202          | 353.936.487          | 242.438.770          | 251.433.249            | 260.761.422            | 270.435.671            | 280.468.834            | 290.874.228            | 301.665.662            | 312.857.458            | 324.464.470            |
| 3.1.2    | OTROS APORTES NACIONALES                    | -                    | -                    | -                    | -                    | -                    | -                      | -                      | -                      | -                      | -                      | -                      | -                      | -                      |
| 3.2      | RECURSOS DEL CREDITO                        | -                    | -                    | -                    | -                    | -                    | -                      | -                      | -                      | -                      | -                      | -                      | -                      | -                      |
| <b>B</b> | <b>GASTOS CORRIENTES</b>                    | <b>1.058.365.163</b> | <b>1.170.034.304</b> | <b>1.402.416.897</b> | <b>1.480.758.730</b> | <b>1.616.692.381</b> | <b>1.765.104.742</b>   | <b>1.927.141.357</b>   | <b>2.104.052.934</b>   | <b>2.297.204.993</b>   | <b>2.508.088.412</b>   | <b>2.738.330.928</b>   | <b>2.989.709.707</b>   | <b>3.264.165.058</b>   |
| <b>1</b> | <b>GASTOS DE FUNCIONAMIENTO</b>             | <b>670.707.471</b>   | <b>648.299.018</b>   | <b>824.270.410</b>   | <b>868.018.494</b>   | <b>947.792.592</b>   | <b>1.034.701.690</b>   | <b>1.129.687.305</b>   | <b>1.233.392.599</b>   | <b>1.346.618.040</b>   | <b>1.470.237.576</b>   | <b>1.605.295.386</b>   | <b>1.752.563.240</b>   | <b>1.913.446.545</b>   |
| 1.1      | SERVICIOS PERSONALES                        | 358.893.493          | 427.167.360          | 565.617.043          | 619.918.217          | 676.826.709          | 738.959.401            | 806.795.874            | 880.699.796            | 961.722.659            | 1.050.008.799          | 1.146.399.607          | 1.251.639.091          | 1.368.539.560          |
| 1.2      | TRANSFERENCIAS DE NOMINA                    | 81.309.447           | 99.461.553           | 117.517.879          | 124.966.584          | 136.438.516          | 148.963.572            | 162.638.428            | 177.568.636            | 193.869.437            | 211.666.651            | 231.097.643            | 252.312.414            | 275.474.693            |
| 1.3      | GASTOS GENERALES                            | 230.504.531          | 121.670.105          | 141.136.488          | 123.133.693          | 134.437.366          | 146.778.716            | 160.253.002            | 174.964.228            | 191.025.944            | 208.562.126            | 227.708.129            | 246.611.735            | 271.434.292            |
| 2        | PENSIONADOS                                 | 101.101.728          | 135.450.292          | 176.586.054          | 213.110.523          | 232.674.069          | 254.033.549            | 277.353.828            | 302.814.910            | 330.613.318            | 360.963.621            | 394.100.082            | 430.276.469            | 469.770.032            |
| 3        | TRANSFERENCIAS A OTRAS ENTIDADES OFICIAL    | 205.739.703          | 288.705.635          | 290.000.690          | 394.641.810          | 430.869.928          | 470.423.788            | 513.608.691            | 560.787.989            | 612.235.551            | 668.438.774            | 729.801.454            | 796.797.227            | 869.943.213            |
| 4        | SERVICIO DEUDA FUNCIONAMIENTO               | 80.616.261           | 97.579.359           | 111.559.743          | 4.987.903            | 5.445.793            | 5.945.716              | 6.491.533              | 7.087.456              | 7.738.084              | 8.448.440              | 9.224.007              | 10.070.771             | 10.995.268             |
| <b>C</b> | <b>DEFICIT O AHORRO CORRIENTE (A-B)</b>     | <b>(62.998.082)</b>  | <b>(2.678.375)</b>   | <b>(113.153.907)</b> | <b>(192.046.918)</b> | <b>(389.561.284)</b> | <b>(602.487.839)</b>   | <b>(601.159.074)</b>   | <b>(711.555.744)</b>   | <b>(834.756.555)</b>   | <b>(972.116.869)</b>   | <b>(1.125.079.754)</b> | <b>(1.295.228.071)</b> | <b>(1.484.297.679)</b> |
| <b>D</b> | <b>PASIVOS FTO VIGENCIAS ANTERIORES</b>     | <b>(61.752.063)</b>  | <b>(124.750.145)</b> | <b>(127.428.520)</b> | <b>(240.582.427)</b> | <b>(432.629.345)</b> | <b>(822.190.629)</b>   | <b>(1.324.678.468)</b> | <b>(1.324.678.468)</b> | <b>(1.925.877.542)</b> | <b>(2.036.234.212)</b> | <b>(2.760.634.097)</b> | <b>(3.008.351.081)</b> | <b>(3.885.713.852)</b> |
| <b>E</b> | <b>DEFICIT O AHORRO CORRIENTE ACUMULADO</b> | <b>(124.750.145)</b> | <b>(127.428.520)</b> | <b>(240.582.427)</b> | <b>(432.629.345)</b> | <b>(822.190.629)</b> | <b>(1.324.678.468)</b> | <b>(1.925.877.542)</b> | <b>(2.036.234.212)</b> | <b>(2.760.634.097)</b> | <b>(3.008.351.081)</b> | <b>(3.885.713.852)</b> | <b>(4.303.578.152)</b> | <b>(5.370.811.531)</b> |

| MUNICIPIO DEL SOCORRO<br>PROYECCION DE INGRESOS Y EGRESOS 2000 - 2008 |   |                      |                      |                      |                      |                      |                        |                        |                        |                        |                        |                        |                        |                        |
|---|---|----------------------|----------------------|----------------------|----------------------|----------------------|------------------------|------------------------|------------------------|------------------------|------------------------|------------------------|------------------------|------------------------|
| ITEM  | CONCEPTO                                    | 1996                 | 1997                 | 1998                 | 1999                 | 2000                 | 2001                   | 2002                   | 2003                   | 2004                   | 2005                   | 2006                   | 2007                   | 2008                   |
|   |   | EJECUTADO            | EJECUTADO            | EJECUTADO            |                      |                      |                        |                        |                        |                        |                        |                        |                        |                        |
| <b>F</b>  | <b>INGRESOS DE CAPITAL O PARA INVERSION</b> | <b>2.098.331.789</b> | <b>3.920.636.514</b> | <b>2.683.789.725</b> | <b>3.554.758.278</b> | <b>3.617.798.586</b> | <b>3.639.585.276</b>   | <b>3.820.340.745</b>   | <b>4.010.560.470</b>   | <b>4.210.769.231</b>   | <b>4.421.523.000</b>   | <b>4.643.410.981</b>   | <b>4.877.057.793</b>   | <b>5.123.125.816</b>   |
| 1   | RECURSOS PROVENIENTES DE RENTAS             | 2.048.331.789        | 3.000.636.514        | 2.683.789.725        | 3.554.758.278        | 3.467.798.586        | 3.639.585.276          | 3.820.340.745          | 4.010.560.470          | 4.210.769.231          | 4.421.523.000          | 4.643.410.981          | 4.877.057.793          | 5.123.125.816          |
| 1.1   | TRANSFERENCIAS CON FORZOSA INVERSION        | 953.369.869          | 1.320.150.400        | 1.455.727.655        | 1.574.919.824        | 1.373.819.699        | 1.424.788.409          | 1.477.648.099          | 1.532.468.892          | 1.599.323.995          | 1.648.287.293          | 1.700.438.792          | 1.772.858.929          | 1.838.631.995          |
| 1.2   | INGRESOS COMPENSADOS                        | 132.371.595          | 357.113.046          | 374.618.191          | 1.030.303.108        | 1.085.321.293        | 1.143.277.451          | 1.204.328.466          | 1.268.639.608          | 1.336.384.961          | 1.407.747.918          | 1.482.921.657          | 1.562.109.674          | 1.645.528.330          |
| 1.3   | FONDOS DE COFINANCIACION                    | 784.414.860          | 1.323.373.068        | 820.012.159          | 932.346.660          | 989.406.276          | 1.049.957.940          | 1.114.215.366          | 1.182.405.347          | 1.254.768.554          | 1.331.560.389          | 1.413.051.885          | 1.499.530.660          | 1.591.301.937          |
| 1.4   | OTROS APORTES NALES Y DPTALES               | 131.851.466          |                      | 16.970.221           |                      |                      |                        |                        |                        |                        |                        |                        |                        |                        |
| 1.5   | RECURSOS DEL BALANCE                        | 46.324.000           |                      | 7.461.500            | 17.188.676           | 19.251.317           | 21.561.476             | 24.148.853             | 27.046.715             | 30.292.321             | 33.927.399             | 37.998.687             | 42.558.530             | 47.665.553             |
| 2   | RECURSOS DE CREDITO                         | 50.000.000           | 920.000.000          | -                    | -                    | 150.000.000          | -                      | -                      | -                      | -                      | -                      | -                      | -                      | -                      |
| 2.1   | CREDITO INTERNO                             | 50.000.000           | 920.000.000          | -                    | -                    | 150.000.000          | -                      | -                      | -                      | -                      | -                      | -                      | -                      | -                      |
| <b>G</b>  | <b>GASTOS DE INVERSION O DE CAPITAL</b>     | <b>2.028.608.552</b> | <b>3.887.943.661</b> | <b>2.552.471.256</b> | <b>3.245.776.783</b> | <b>3.434.034.099</b> | <b>3.571.267.161</b>   | <b>3.657.614.995</b>   | <b>3.748.405.763</b>   | <b>3.749.482.505</b>   | <b>3.724.021.964</b>   | <b>3.904.681.949</b>   | <b>4.089.583.696</b>   | <b>4.276.992.112</b>   |
| 1   | PAGO DE CAPITAL                             | 1.834.044.145        | 3.642.434.677        | 2.005.295.818        | 2.745.643.974        | 2.884.491.190        | 3.030.071.460          | 3.182.999.167          | 3.343.645.135          | 3.512.398.905          | 3.689.669.678          | 3.875.887.306          | 4.071.503.339          | 4.276.992.112          |
| 1.1   | SECTOR EDUCACION                            | 382.706.323          | 574.180.718          | 454.834.885          | 618.153.750          | 649.413.785          | 682.189.698            | 716.619.812            | 752.787.614            | 790.780.805            | 830.691.512            | 872.616.513            | 916.657.469            | 962.921.171            |
| 1.2   | SECTOR SALUD                                | 359.163.183          | 393.406.276          | 423.682.594          | 589.737.744          | 409.446.762          | 430.111.561            | 451.819.292            | 474.622.611            | 488.576.814            | 523.739.986            | 550.173.143            | 577.940.362            | 607.109.033            |
| 1.3   | SECTOR AGUA POTABLE Y SANEAMIENTO BASICO    | 389.104.857          | 873.097.998          | 496.626.399          | 699.477.050          | 734.849.864          | 771.637.464            | 810.697.147            | 851.823.168            | 894.814.640            | 939.975.934            | 987.416.526            | 1.037.251.432          | 1.089.601.511          |
| 1.4   | SECTOR AGROPECUARIO                         | 37.487.000           | 41.450.091           | 25.000.000           | 50.220.681           | 52.780.341           | 55.423.155             | 58.230.362             | 61.158.744             | 64.245.695             | 67.487.892             | 70.884.026             | 74.472.026             | 78.239.630             |
| 1.5   | SECTOR VIVIENDA                             | 8.290.062            | 82.841.063           | 69.506.273           | 78.333.521           | 82.294.847           | 86.448.268             | 90.811.312             | 95.394.569             | 100.209.123            | 105.266.677            | 110.579.488            | 116.160.433            | 122.023.050            |
| 1.6   | SECTOR DEPORTE, CULTURA Y RECREACION        | 224.549.812          | 492.192.228          | 79.953.325           | 174.509.814          | 183.334.775          | 192.687.682            | 202.307.582            | 212.518.046            | 223.243.831            | 234.510.947            | 246.346.715            | 258.779.834            | 271.840.452            |
| 1.7   | SECTOR VIAL                                 | 325.953.498          | 832.310.375          | 258.243.315          | 387.246.650          | 406.829.714          | 427.382.409            | 448.931.390            | 471.588.957            | 495.390.052            | 520.392.388            | 546.656.592            | 574.246.350            | 603.228.563            |
| 1.8   | OTROS SECTORES                              | 106.789.410          | 352.955.908          | 197.449.037          | 347.964.764          | 365.561.342          | 384.011.223            | 403.392.270            | 423.751.478            | 445.138.215            | 467.604.340            | 491.204.331            | 515.995.414            | 542.037.703            |
| 2   | PAGO DE FINANCIACION                        | 194.564.407          | 245.508.984          | 547.175.438          | 500.132.808          | 549.542.909          | 541.195.791            | 474.615.828            | 494.760.628            | 237.083.690            | 34.352.286             | 28.794.643             | 18.086.357             | -                      |
| 2.1   | SERVICIO DE LA DEUDA INTERNA                | 194.564.407          | 245.508.984          | 547.175.438          | 500.132.808          | 549.542.909          | 541.195.791            | 474.615.828            | 494.760.628            | 237.083.690            | 34.352.286             | 28.794.643             | 18.086.357             | -                      |
| <b>I</b>  | <b>AHORRO DISPONIBLE DE CAPITAL (F-G)</b>   | <b>69.723.237</b>    | <b>32.692.853</b>    | <b>131.318.470</b>   | <b>308.981.496</b>   | <b>183.764.487</b>   | <b>68.318.114</b>      | <b>162.725.750</b>     | <b>262.154.707</b>     | <b>461.286.726</b>     | <b>697.501.036</b>     | <b>738.729.032</b>     | <b>787.474.097</b>     | <b>846.133.704</b>     |
| <b>J</b>  | <b>AHORRO FINAL (E+I)</b>                   | <b>(55.026.908)</b>  | <b>(94.735.667)</b>  | <b>(109.263.957)</b> | <b>(123.647.849)</b> | <b>(638.426.142)</b> | <b>(1.256.360.354)</b> | <b>(1.763.151.793)</b> | <b>(1.774.079.595)</b> | <b>(2.299.347.371)</b> | <b>(2.310.850.045)</b> | <b>(3.146.984.820)</b> | <b>(3.516.105.055)</b> | <b>(4.523.877.827)</b> |

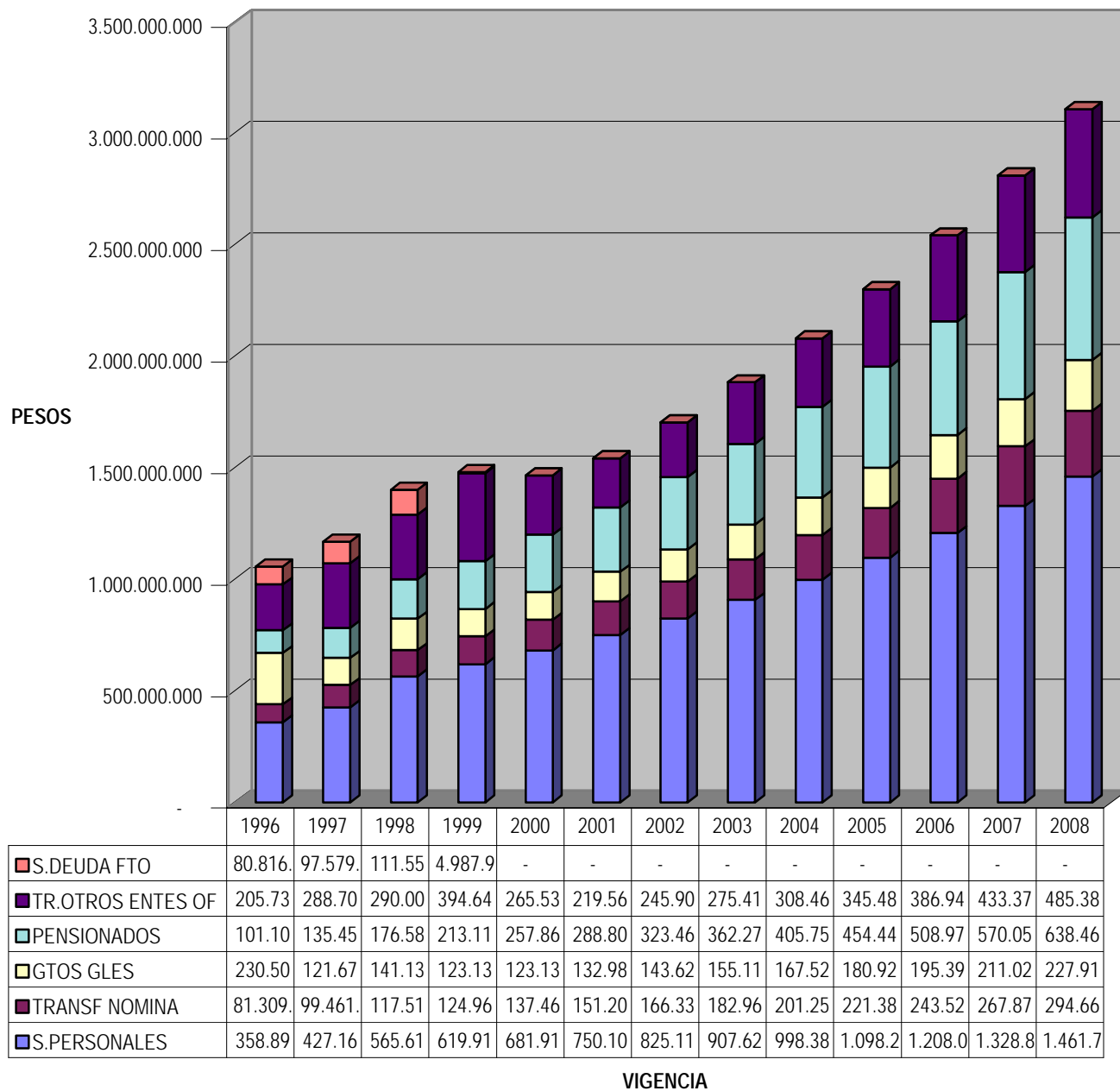
| CRECIMIENTO REAL DE INGRESOS DE FUNCIONAMIENTO VS GASTOS DE FUNCIONAMIENTO 1996 - 1999 |             |             |             |
|--|-------------|-------------|-------------|
| MUNICIPIO SOCORRO  |             |             |             |
| CONCEPTO   | 1996 - 1997 | 1997 - 1998 | 1998 - 1999 |
| CRECIMIENTO INGRESOS TOTALES FUNCIONAMIENTO  | 17,28%      | 10,44%      | -0,04%      |
| CRECIMIENTO REAL - VALORES REEXPRESADOS  | -13,00%     | -10,61%     | -13,84%     |
| CONCEPTO   | 1996 - 1997 | 1997 - 1998 | 1998 - 1999 |
| CRECIMIENTO GASTOS TOTALES FUNCIONAMIENTO  | 10,55%      | 19,86%      | 5,59%       |
| CRECIMIENTO REAL - VALORES REEXPRESADOS  | -7,44%      | 1,15%       | -8,97%      |

### COMPORTAMIENTO GASTOS FUNCIONAMIENTO MUNICIPIO SOCORRO 1996-1999



VIGENCIA

**COMPORTAMIENTO GASTOS DE FUNCIONAMIENTO MUNICIPIO SOCORRO  
1996 - 2008**



## GTOS FTO PROY 2008

|             | 1996          | 1997          | 1998          | 1999          | 2000          | 2001          | 2002          | 2003          | 2004          | 2005          | 2006          | 2007          | 2008          |
|-------------|---------------|---------------|---------------|---------------|---------------|---------------|---------------|---------------|---------------|---------------|---------------|---------------|---------------|
| S.PERSONAL  | 358.893.493   | 427.167.360   | 565.617.043   | 619.918.217   | 681.910.039   | 750.101.043   | 825.111.147   | 907.622.262   | 998.384.488   | 1.098.222.936 | 1.208.045.230 | 1.328.849.753 | 1.461.734.728 |
| TRANSF NOMI | 81.309.447    | 99.461.553    | 117.517.879   | 124.966.584   | 137.463.242   | 151.209.567   | 166.330.523   | 182.963.576   | 201.259.933   | 221.385.927   | 243.524.519   | 267.876.971   | 294.664.668   |
| GTOS GLES   | 230.504.531   | 121.670.105   | 141.135.488   | 123.133.693   | 123.133.693   | 132.984.388   | 143.623.140   | 155.112.991   | 167.522.030   | 180.923.792   | 195.397.696   | 211.029.511   | 227.911.872   |
| PENSIONADO  | 101.101.728   | 135.450.292   | 176.586.054   | 213.110.523   | 257.863.733   | 288.807.381   | 323.464.266   | 362.279.978   | 405.753.576   | 454.444.005   | 508.977.286   | 570.054.560   | 638.461.107   |
| TRANSF ENTE | 205.739.703   | 288.705.635   | 290.000.690   | 394.641.810   | 265.537.725   | 219.562.252   | 245.909.722   | 275.418.889   | 308.469.156   | 345.485.454   | 386.943.709   | 433.376.954   | 485.382.188   |
| SERV DEUDA  | 80.816.261    | 97.579.359    | 111.559.743   | 4.987.903     | -             | -             | -             | -             | -             | -             | -             | -             | -             |
|             | 1.058.365.163 | 1.170.034.304 | 1.402.416.897 | 1.480.758.730 | 1.465.908.432 | 1.542.664.630 | 1.704.438.798 | 1.883.397.695 | 2.081.389.182 | 2.300.462.114 | 2.542.888.439 | 2.811.187.749 | 3.108.154.564 |



## ING. Y EGR. PERCAPITA 1996-1999

**MUNICIPIO DEL SOCORRO**  
**INGRESOS Y EGRESOS PERCAPITA 1996 -1999**

| CONCEPTO         |   | 1996                    | ING / EGR      | 1997                    | ING / EGR       | 1998                    | ING / EGR       | 1999                    | ING / EGR       |
|------------------|---|-------------------------|----------------|-------------------------|-----------------|-------------------------|-----------------|-------------------------|-----------------|
|                  |   | EJECUTADO               | PERCAPITA      | EJECUTADO               | PERCAPITA       | EJECUTADO               | PERCAPITA       | EJECUTADO               | PERCAPITA       |
| <b>POBLACION</b> |   | <b>24632</b>            |                | <b>24595</b>            |                 | <b>24546</b>            |                 | <b>24484</b>            |                 |
|                  | <b>INGRESOS TOTAL</b>                   | <b>3.264.108.272,73</b> | <b>132.515</b> | <b>4.514.376.488,43</b> | <b>183.549</b>  | <b>3.973.052.715,91</b> | <b>52.524</b>   | <b>4.843.470.090,10</b> | <b>52.635</b>   |
| <b>A</b>         | <b>INGRESOS CORRIENTES</b>              | <b>1.046.489.902</b>    | <b>42.485</b>  | <b>1.217.241.849</b>    | <b>49.491</b>   | <b>1.289.262.990</b>    | <b>26.735</b>   | <b>1.288.711.812</b>    | <b>29.191</b>   |
| 1                | <b>INGRESOS TRIBUTARIOS</b>             | <b>539.687.311</b>      | <b>21.910</b>  | <b>587.830.563</b>      | <b>23.900</b>   | <b>656.236.871</b>      | <b>14.720</b>   | <b>714.713.901</b>      | <b>16.688</b>   |
| 1,1              | PREDIAL UNIFICADO                       | 326.903.621             | <b>13.272</b>  | 358.550.140             | <b>14.578</b>   | 361.313.316             | <b>4.674</b>    | 408.597.827             | <b>5.378</b>    |
| 1,2              | INDUSTRIA Y COMERCIO                    | 73.717.730              | <b>2.993</b>   | 88.075.534              | <b>3.581</b>    | 114.717.604             | <b>5.201</b>    | 131.664.231             | <b>4.317</b>    |
| 1,3              | CIRCULACION Y TRANSITO                  | 104.051.081             | <b>4.224</b>   | 108.360.486             | <b>4.406</b>    | 127.664.154             | <b>2.141</b>    | 105.706.852             | <b>2.808</b>    |
| 1,4              | OTROS TRIBUTARIOS                       | 35.014.879              | <b>1.422</b>   | 32.844.403              | <b>1.335</b>    | 52.541.797              | <b>9.353</b>    | 68.744.991              | <b>8.988</b>    |
| 2                | <b>INGRESOS NO TRIBUTARIOS</b>          | <b>226.194.291</b>      | <b>9.183</b>   | <b>262.278.256</b>      | <b>10.664</b>   | <b>229.580.917</b>      | <b>2.925</b>    | <b>220.061.424</b>      | <b>5.791</b>    |
| 2,1              | TASAS, TARIFAS Y DERECHOS               | 58.234.659              | <b>2.364</b>   | 81.010.184              | <b>3.294</b>    | 71.798.080              | <b>666</b>      | 141.774.956             | <b>723</b>      |
| 2,2              | MULTAS                                  | 14.183.371              | <b>576</b>     | 19.586.040              | <b>796</b>      | 16.353.463              | <b>221</b>      | 17.704.297              | <b>227</b>      |
| 2,3              | RENTAS CONTRACTUALES                    | 10.097.291              | <b>410</b>     | 9.351.402               | <b>380</b>      | 5.435.150               | <b>1.541</b>    | 5.564.205               | <b>1.287</b>    |
| 2,4              | RENDIMIENTOS FINANCIEROS                | 71.181.739              | <b>2.890</b>   | 62.460.032              | <b>2.540</b>    | 37.817.927              | <b>4.000</b>    | 31.504.960              | <b>960</b>      |
| 2,5              | VENTA DE SERVICIOS                      | 72.497.230              | <b>2.943</b>   | 89.870.598              | <b>3.654</b>    | 98.176.298              | -               | 23.513.006              | -               |
| 2,6              | OTROS NO TRIBUTARIOS                    |                         | -              |                         | -               |                         | <b>16.436</b>   |                         | <b>14.456</b>   |
| 3                | <b>TRANSFERENCIAS CORRIENTES</b>        | <b>280.608.300</b>      | <b>11.392</b>  | <b>367.133.030</b>      | <b>14.927</b>   | <b>403.445.202</b>      | <b>16.436</b>   | <b>353.936.487</b>      | <b>14.456</b>   |
| 3,1              | DEL GOBIERNO NACIONAL                   | 280.608.300             | <b>11.392</b>  | 367.133.030             | <b>14.927</b>   | 403.445.202             | <b>16.436</b>   | 353.936.487             | <b>14.456</b>   |
| 3,1,1,           | PARTICIPACION INGRESOS CTES DE LA       | 280.608.300             | <b>11.392</b>  | 367.133.030             | <b>14.927</b>   | 403.445.202             | -               | 353.936.487             | -               |
| 3,1,2            | OTROS APORTES NACIONALES                |                         | -              |                         | -               |                         | -               |                         | -               |
| 3,2              | RECURSOS DEL CREDITO                    |                         | -              |                         | -               |                         | -               |                         | -               |
|                  | <b>GASTOS TOTALES</b>                   | <b>3.086.973.715</b>    | <b>125.324</b> | <b>5.057.977.965</b>    | <b>205.651</b>  | <b>3.954.888.153</b>    | <b>161.121</b>  | <b>4.726.535.513</b>    | <b>193.046</b>  |
| <b>B</b>         | <b>GASTOS CORRIENTES</b>                | <b>1.058.365.163</b>    | <b>42.967</b>  | <b>1.170.034.304</b>    | <b>23,13%</b>   | <b>1.402.416.897</b>    | <b>57.134</b>   | <b>1.480.758.730</b>    | <b>60.479</b>   |
|                  |   |                         | -              |                         | -               |                         | -               |                         | -               |
| 1                | <b>GASTOS DE FUNCIONAMIENTO</b>         | <b>670.707.471</b>      | <b>27.229</b>  | <b>648.299.018</b>      | <b>26.359</b>   | <b>824.270.410</b>      | <b>33.581</b>   | <b>868.018.494</b>      | <b>35.452</b>   |
| 1,1              | SERVICIOS PERSONALES                    | 358.893.493             | <b>14.570</b>  | 427.167.360             | <b>17.368</b>   | 565.617.043             | <b>23.043</b>   | 619.918.217             | <b>25.319</b>   |
| 1,2              | TRANSFERENCIAS DE NOMINA                | 81.309.447              | <b>3.301</b>   | 99.461.553              | <b>4.044</b>    | 117.517.879             | <b>4.788</b>    | 124.966.584             | <b>5.104</b>    |
| 1,3              | GASTOS GENERALES                        | 230.504.531             | <b>9.358</b>   | 121.670.105             | <b>4.947</b>    | 141.135.488             | <b>5.750</b>    | 123.133.693             | <b>5.029</b>    |
| 2                | PENSIONADOS                             | 101.101.728             | <b>4.104</b>   | 135.450.292             | <b>5.507</b>    | 176.586.054             | <b>7.194</b>    | 213.110.523             | <b>8.704</b>    |
| 3                | TRANSFERENCIAS A OTRAS ENTIDADES        | 205.739.703             | <b>8.353</b>   | 288.705.635             | <b>11.738</b>   | 290.000.690             | <b>11.815</b>   | 394.641.810             | <b>16.118</b>   |
| 4                | SERVICIO DEUDA FUNCIONAMIENTO           | 80.816.261              | <b>3.281</b>   | 97.579.359              | <b>3.967</b>    | 111.559.743             | <b>4.545</b>    | 4.987.903               | <b>204</b>      |
| <b>C</b>         | <b>DEFICIT O AHORRO CORRIENTE (A-B)</b> | <b>(11.875.261)</b>     |                | <b>47.207.545</b>       | <b>4949120%</b> | <b>(113.153.907)</b>    | <b>(30.399)</b> | <b>(192.046.918)</b>    | <b>(31.288)</b> |



## ING. Y EGR. PERCAPITA 1996-1999

**MUNICIPIO DEL SOCORRO**  
**INGRESOS Y EGRESOS PERCAPITA 1996 -1999**

| CONCEPTO | 1996                                      | ING / EGR            | 1997          | ING / EGR            | 1998           | ING / EGR            | 1999           | ING / EGR            |                |
|----------|---|----------------------|---------------|----------------------|----------------|----------------------|----------------|----------------------|----------------|
|          | EJECUTADO                                 | PERCAPITA            | EJECUTADO     | PERCAPITA            | EJECUTADO      | PERCAPITA            | EJECUTADO      | PERCAPITA            |                |
| <b>D</b> | <b>INGRESOS DE CAPITAL O PARA INVERSI</b> | <b>2.217.618.371</b> | <b>90.030</b> | <b>3.297.134.640</b> | <b>134.057</b> | <b>2.683.789.725</b> | <b>109.337</b> | <b>3.554.758.278</b> | <b>145.187</b> |
| 1        | RECURSOS PROVENIENTES DE RENTAS           | 2.167.618.371        | 88.000        | 2.377.134.640        | 96.651         | 2.683.789.725        | 109.337        | 3.554.758.278        | 145.187        |
| 1,1      | TRANSFERENCIAS ICN FORZOSA INVER          | 1.072.656.450        | 43.547        | 1.221.172.987        | 49.651         | 1.455.727.655        | 59.306         | 1.574.919.834        | 64.324         |
| 1,2      | INGRESOS COMPENSADOS                      | 132.371.595          | 5.374         | 304.924.306          | 12.398         | 374.618.191          | 15.262         | 1.030.303.108        | 42.081         |
| 1,3      | FONDOS DE COFINANCIACION                  | 784.414.860          | 31.845        | 851.037.347          | 34.602         | 829.012.159          | 33.774         | 932.346.660          | 38.080         |
| 1,4      | OTROS APORTES NALES Y DPTALES             | 131.851.466          | 5.353         |                      | -              | 16.970.221           | 691            |                      | -              |
| 1,5      | RECURSOS DEL BALANCE                      | 46.324.000           | 1.881         |                      | -              | 7.461.500            | 304            | 17.188.676           | 702            |
| 2        | RECURSOS DE CREDITO                       | 50.000.000           | 2.030         | 920.000.000          | 37.406         | -                    | -              | -                    | -              |
| 2,1      | CREDITO INTERNO                           | 50.000.000           | 2.030         | 920.000.000          | 37.406         |                      | -              |                      | -              |
| <b>E</b> | <b>GASTOS DE INVERSION O DE CAPITAL</b>   | <b>2.028.608.552</b> | <b>82.357</b> | <b>3.887.943.661</b> | <b>158.079</b> | <b>2.552.471.256</b> | <b>103.987</b> | <b>3.245.776.783</b> | <b>132.567</b> |
| <b>1</b> | <b>PAGO DE CAPITAL</b>                    | <b>1.834.044.145</b> | <b>74.458</b> | <b>3.642.434.677</b> | <b>148.097</b> | <b>2.005.295.818</b> | <b>81.695</b>  | <b>2.745.643.974</b> | <b>112.140</b> |
| 1,1      | SECTOR EDUCACION                          | 382.706.323          | 15.537        | 574.180.718          | 23.345         | 454.834.885          | 18.530         | 618.153.750          | 25.247         |
| 1,2      | SECTOR SALUD                              | 359.163.183          | 14.581        | 393.406.276          | 15.995         | 423.682.594          | 17.261         | 389.737.744          | 15.918         |
| 1,3      | SECTOR AGUA POTABLE Y SANEAMIENT          | 389.104.857          | 15.797        | 873.097.998          | 35.499         | 496.626.389          | 20.232         | 699.477.050          | 28.569         |
| 1,4      | SECTOR AGROPECUARIO                       | 37.487.000           | 1.522         | 41.450.091           | 1.685          | 25.000.000           | 1.018          | 50.220.681           | 2.051          |
| 1,5      | SECTOR VIVIENDA                           | 8.290.062            | 337           | 82.841.083           | 3.368          | 69.506.273           | 2.832          | 78.333.521           | 3.199          |
| 1,6      | SECTOR DEPORTE, CULTURA Y RECRE           | 224.549.812          | 9.116         | 492.192.228          | 20.012         | 79.953.325           | 3.257          | 174.509.814          | 7.128          |
| 1,7      | SECTOR VIAL                               | 325.953.498          | 13.233        | 832.310.375          | 33.841         | 258.243.315          | 10.521         | 387.246.650          | 15.816         |
| 1,8      | OTROS SECTORES                            | 106.789.410          | 4.335         | 352.955.908          | 14.351         | 197.449.037          | 8.044          | 347.964.764          | 14.212         |
| <b>2</b> | <b>PAGO DE FINANCIACION</b>               | <b>194.564.407</b>   | <b>7.899</b>  | <b>245.508.984</b>   | <b>9.982</b>   | <b>547.175.438</b>   | <b>22.292</b>  | <b>500.132.808</b>   | <b>20.427</b>  |
| 2,1      | SERVICIO DE LA DEUDA INTERNA              | 194.564.407          | 7.899         | 245.508.984          | 9.982          | 547.175.438          | 22.292         | 500.132.808          | 20.427         |



## PARTING Y GATO

**MUNICIPIO DEL SOCORRO**  
**PARTICIPACION DE INGRESOS Y EGRESOS EN LOS INGRESOS TOTALES Y EGRESOS TOTALES**

| CONCEPTO | 1996                                      |                      | 1997          |                      | 1998          |                      | 1999          |                      |               |
|----------|---|----------------------|---------------|----------------------|---------------|----------------------|---------------|----------------------|---------------|
|          | EJECUTADO                                 | % PARTIC             | EJECUTADO     | % PARTIC             | EJECUTADO     | % PARTIC             | EJECUTADO     | % PARTIC             |               |
| <b>D</b> | <b>INGRESOS DE CAPITAL O PARA INVERSI</b> | <b>2.217.618.371</b> | <b>67,94%</b> | <b>3.297.134.640</b> | <b>73,04%</b> | <b>2.683.789.725</b> | <b>67,55%</b> | <b>3.554.758.278</b> | <b>73,39%</b> |
| 1        | RECURSOS PROVENIENTES DE RENTA            | 2.167.618.371        | 66,41%        | 2.377.134.640        | 52,66%        | 2.683.789.725        | 67,55%        | 3.554.758.278        | 73,39%        |
| 1,1      | TRANSFERENCIAS ICN FORZOSA INVER          | 1.072.656.450        | 32,86%        | 1.221.172.987        | 27,05%        | 1.455.727.655        | 36,64%        | 1.574.919.834        | 32,52%        |
| 1,2      | INGRESOS COMPENSADOS                      | 132.371.595          | 4,06%         | 304.924.306          | 6,75%         | 374.618.191          | 9,43%         | 1.030.303.108        | 21,27%        |
| 1,3      | FONDOS DE COFINANCIACION                  | 784.414.860          | 24,03%        | 851.037.347          | 18,85%        | 829.012.159          | 20,87%        | 932.346.660          | 19,25%        |
| 1,4      | OTROS APORTES NALES Y DPTALES             | 131.851.466          | 4,04%         |                      | 0,00%         | 16.970.221           | 0,43%         |                      | 0,00%         |
| 1,5      | RECURSOS DEL BALANCE                      | 46.324.000           | 1,42%         |                      | 0,00%         | 7.461.500            | 0,19%         | 17.188.676           | 0,35%         |
| 2        | RECURSOS DE CREDITO                       | 50.000.000           | 1,53%         | 920.000.000          | 20,38%        | -                    | 0,00%         | -                    | 0,00%         |
| 2,1      | CREDITO INTERNO                           | 50.000.000           | 1,53%         | 920.000.000          | 20,38%        |                      | 0,00%         |                      | 0,00%         |
| <b>E</b> | <b>GASTOS DE INVERSION O DE CAPITAL</b>   | <b>2.028.608.552</b> | <b>65,72%</b> | <b>3.887.943.661</b> | <b>76,87%</b> | <b>2.552.471.256</b> | <b>64,54%</b> | <b>3.245.776.783</b> | <b>68,67%</b> |
| <b>1</b> | <b>PAGO DE CAPITAL</b>                    | <b>1.834.044.145</b> | <b>59,41%</b> | <b>3.642.434.677</b> | <b>72,01%</b> | <b>2.005.295.818</b> | <b>50,70%</b> | <b>2.745.643.974</b> | <b>58,09%</b> |
| 1,1      | SECTOR EDUCACION                          | 382.706.323          | 12,40%        | 574.180.718          | 11,35%        | 454.834.885          | 11,50%        | 618.153.750          | 13,08%        |
| 1,2      | SECTOR SALUD                              | 359.163.183          | 11,63%        | 393.406.276          | 7,78%         | 423.682.594          | 10,71%        | 389.737.744          | 8,25%         |
| 1,3      | SECTOR AGUA POTABLE Y SANEAMIE            | 389.104.857          | 12,60%        | 873.097.998          | 17,26%        | 496.626.389          | 12,56%        | 699.477.050          | 14,80%        |
| 1,4      | SECTOR AGROPECUARIO                       | 37.487.000           | 1,21%         | 41.450.091           | 0,82%         | 25.000.000           | 0,63%         | 50.220.681           | 1,06%         |
| 1,5      | SECTOR VIVIENDA                           | 8.290.062            | 0,27%         | 82.841.083           | 1,64%         | 69.506.273           | 1,76%         | 78.333.521           | 1,66%         |
| 1,6      | SECTOR DEPORTE, CULTURA Y RECRE           | 224.549.812          | 7,27%         | 492.192.228          | 9,73%         | 79.953.325           | 2,02%         | 174.509.814          | 3,69%         |
| 1,7      | SECTOR VIAL                               | 325.953.498          | 10,56%        | 832.310.375          | 16,46%        | 258.243.315          | 6,53%         | 387.246.650          | 8,19%         |
| 1,8      | OTROS SECTORES                            | 106.789.410          | 3,46%         | 352.955.908          | 6,98%         | 197.449.037          | 4,99%         | 347.964.764          | 7,36%         |
| <b>2</b> | <b>PAGO DE FINANCIACION</b>               | <b>194.564.407</b>   | <b>6,30%</b>  | <b>245.508.984</b>   | <b>4,85%</b>  | <b>547.175.438</b>   | <b>13,84%</b> | <b>500.132.808</b>   | <b>10,58%</b> |
| 2,1      | SERVICIO DE LA DEUDA INTERNA              | 194.564.407          | 6,30%         | 245.508.984          | 4,85%         | 547.175.438          | 13,84%        | 500.132.808          | 10,58%        |

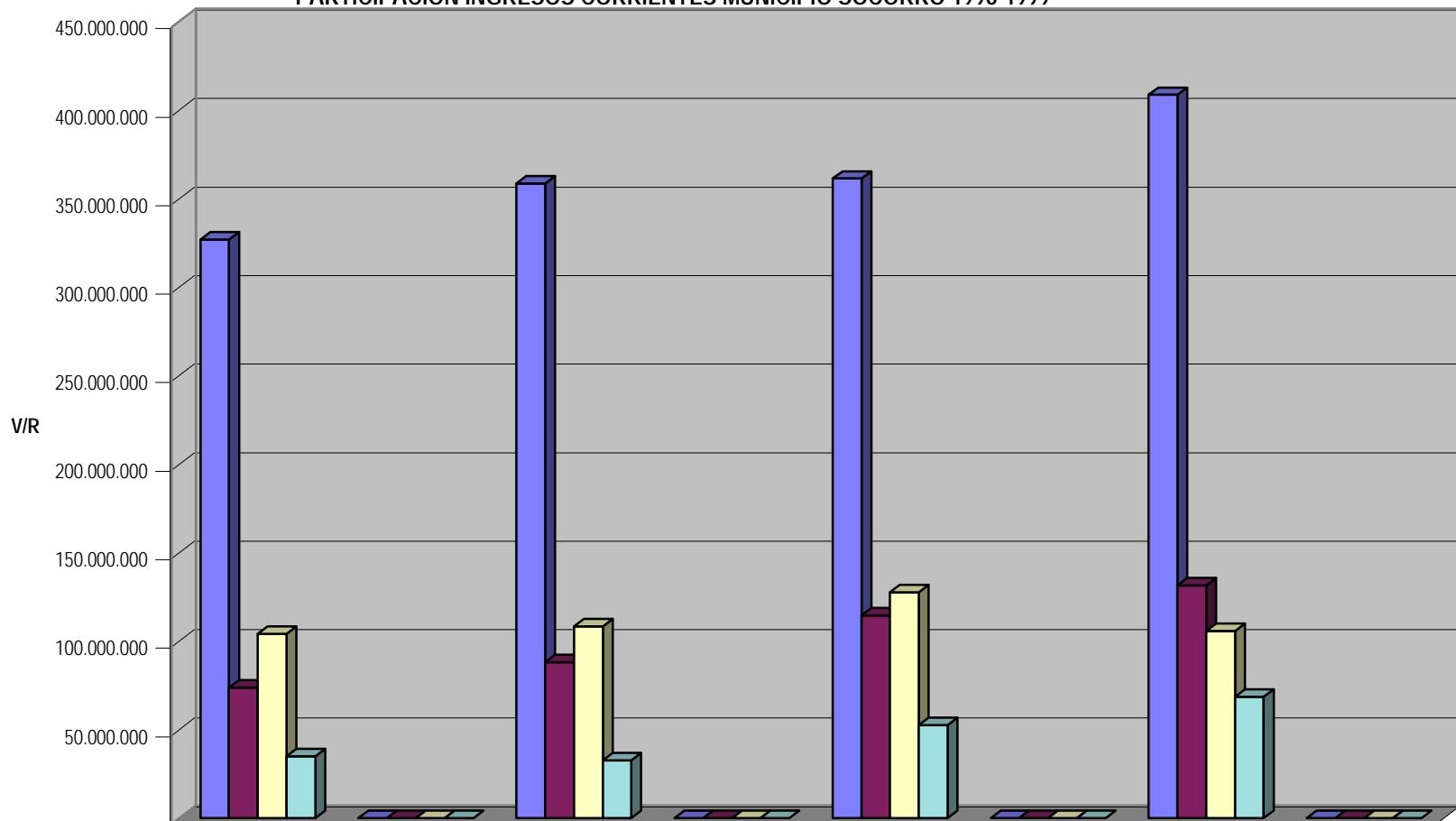
**MUNICIPIO DEL SOCORRO**  
**GASTOS PERCAPITA PROYECTADOS 2000 - 2008**

| CONCEPTO          | 2000          | 2001          | 2002          | 2003          | 2004          | 2005          | 2006           | 2007           | 2008           |
|-------------------|---------------|---------------|---------------|---------------|---------------|---------------|----------------|----------------|----------------|
| S.PERSONALES      | 27.946        | 30.867        | 34.119        | 37.744        | 41.793        | 46.321        | 51.343         | 56.910         | 63.080         |
| TRANSF NOMINA     | 5.634         | 6.222         | 6.878         | 7.609         | 8.425         | 9.338         | 10.350         | 11.472         | 12.716         |
| GTOS GLES         | 5.046         | 5.472         | 5.939         | 6.450         | 7.013         | 7.631         | 8.305          | 9.038          | 9.835          |
| PENSIONADOS       | 10.568        | 11.885        | 13.376        | 15.065        | 16.985        | 19.168        | 21.632         | 24.413         | 27.552         |
| TRANSF ENTES OFIC | 10.882        | 9.035         | 10.169        | 11.453        | 12.913        | 14.572        | 16.446         | 18.560         | 20.946         |
| SERV DEUDA FUNC   | -             | -             | -             | -             | -             | -             | -              | -              | -              |
| <b>TOTALES</b>    | <b>60.076</b> | <b>63.482</b> | <b>70.481</b> | <b>78.322</b> | <b>87.128</b> | <b>97.029</b> | <b>108.076</b> | <b>120.394</b> | <b>134.131</b> |

**MUNICIPIO DEL SOCORRO**  
**GASTOS DE FUNCIONAMIENTO PERCAPITA 1996 - 1999**

|                   | <b>2004</b>          | <b>2005</b>  | <b>2006</b>          | <b>2007</b>          | <b>2008</b>  |
|-------------------|----------------------|--------------|----------------------|----------------------|--------------|
| POBLACION         | 23889                | 23709        | 23.529               | 23.350               | 23.173       |
| S.PERSONALES      | 998.384.488          | #####        | 1.208.045.231        | 1.328.849.754        | #####        |
| TRANSF NOMINA     | 201.259.933          | 221.385.926  | 243.524.518          | 267.876.970          | 294.664.667  |
| GTOS GLES         | 167.522.030          | 180.923.792  | 195.397.696          | 211.029.511          | 227.911.872  |
| PENSIONADOS       | 405.753.576          | 454.444.005  | 508.977.286          | 570.054.560          | 638.461.107  |
| TRANSF ENTES OFIC | 308.469.156          | 345.485.454  | 386.943.709          | 433.376.954          | 485.382.188  |
| SERV DEUDA FUNC   |                      |              |                      |                      |              |
| <b>TOTALES</b>    | <b>2.081.389.182</b> | <b>#####</b> | <b>2.542.888.439</b> | <b>2.811.187.749</b> | <b>#####</b> |

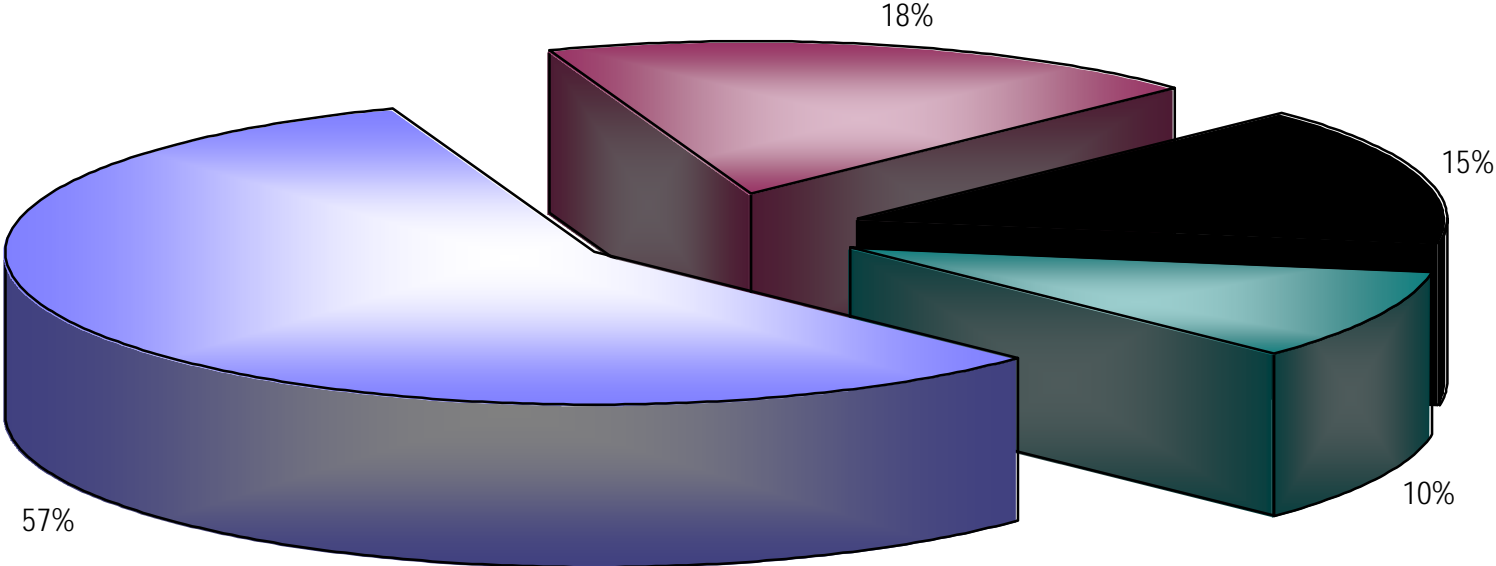
**PARTICIPACION INGRESOS CORRIENTES MUNICIPIO SOCORRO 1996-1999**



|                          | 1996        |     | 1997        |     | 1998        |     | 1999        |     |
|--------------------------|-------------|-----|-------------|-----|-------------|-----|-------------|-----|
| ■ PREDIAL UNIFICADO      | 326.903.621 | 61% | 358.550.140 | 61% | 361.313.316 | 55% | 408.597.827 | 57% |
| ■ INDUSTRIA Y COMERCIO   | 73.717.730  | 14% | 88.075.534  | 15% | 114.717.604 | 17% | 131.664.231 | 18% |
| ■ CIRCULACION Y TRANSITO | 104.051.081 | 19% | 108.360.486 | 18% | 127.664.154 | 19% | 105.706.852 | 15% |
| ■ OTROS TRIBUTARIOS      | 35.014.879  | 6%  | 32.844.403  | 6%  | 52.541.797  | 8%  | 68.744.991  | 10% |

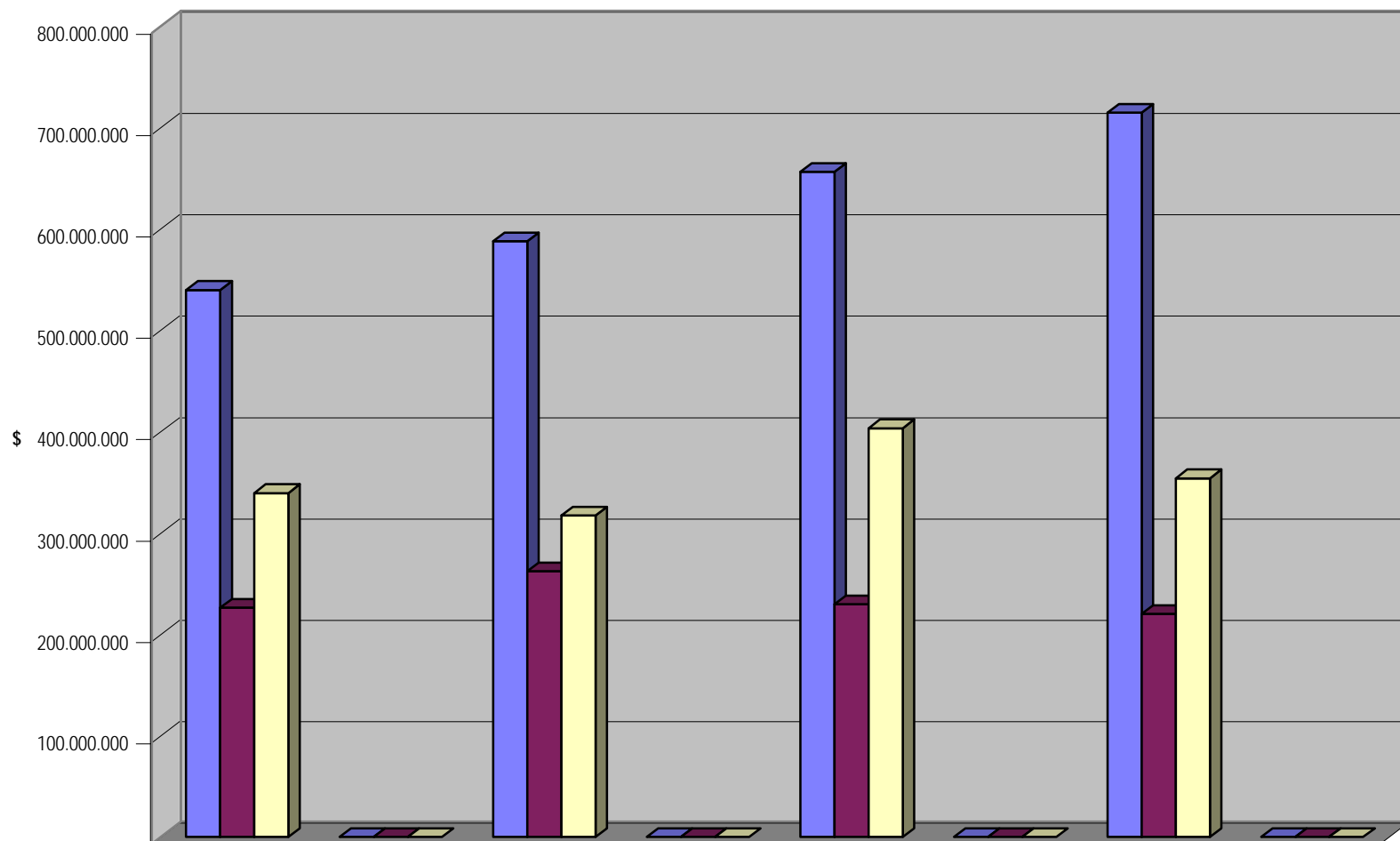
**VIGENCIA**

PARTICIPACION PROYECTADA INGRESOS TRIBUTARIOS 2000 - 2008



■ PREDIAL UNIFICADO ■ INDUSTRIA Y COMERCIO ■ CIRCULACION Y TRANSITO ■ OTROS TRIBUTARIOS

### PARTICIPACION INGRESOS CORRIENTES 1996 - 1999

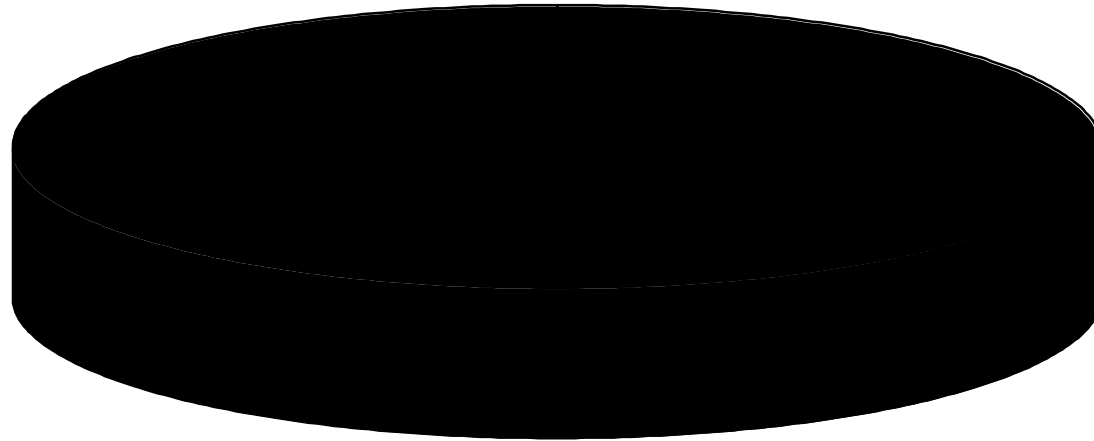


|                        | 1996        |        | 1997        |        | 1998        |        | 1999        |        |
|------------------------|-------------|--------|-------------|--------|-------------|--------|-------------|--------|
| ■ TRIBUTARIOS          | 539.687.311 | 48,82% | 587.830.563 | 50,36% | 656.236.871 | 50,90% | 714.713.901 | 55,46% |
| ■ NO TRIBUTARIOS       | 226.194.291 | 20,46% | 262.278.256 | 22,47% | 229.580.917 | 17,81% | 220.061.424 | 17,08% |
| ■ LIBRE ASIGNACION ICN | 339.485.479 | 30,71% | 317.247.110 | 27,18% | 403.445.202 | 31,29% | 353.936.487 | 27,46% |

VIGENCIAS

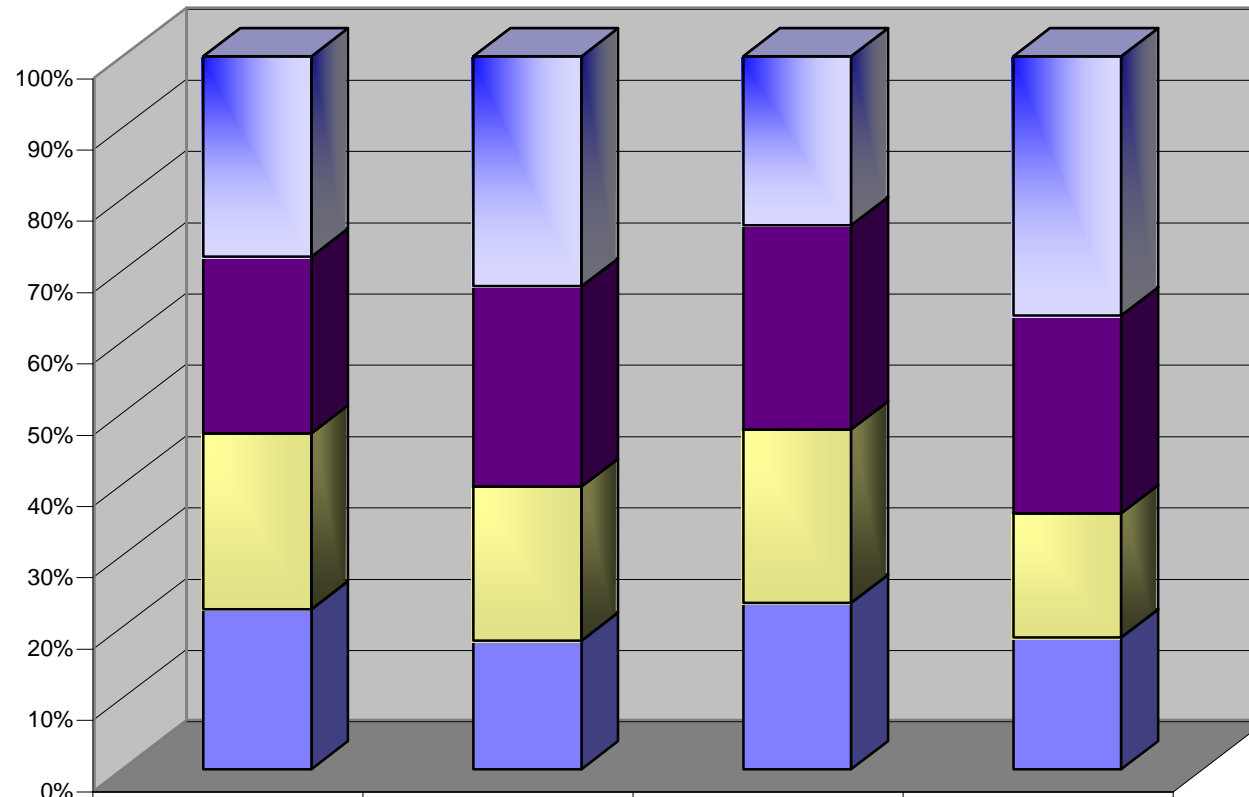


PROYECCION INGRESOS CORRIENTES 2000 - 2008



100%

### PARTICIPACION INGRESOS TRIBUTARIOS 1996 - 1999



|        | PREDIAL UNIFICADO | INDUSTRIA Y COMERCIO | CIRCULACION Y TRANSITO | OTROS TRIBUTARIOS |
|--------|-------------------|----------------------|------------------------|-------------------|
| ■ 1999 | 57%               | 18%                  | 15%                    | 10%               |
| ■ 1999 | 408.597.827       | 131.664.231          | 105.706.852            | 68.744.991        |
| ■ 1998 | 55%               | 17%                  | 19%                    | 8%                |
| ■ 1998 | 361.313.316       | 114.717.604          | 127.664.154            | 52.541.797        |
| ■ 1997 | 61%               | 15%                  | 18%                    | 6%                |
| ■ 1997 | 358.550.140       | 88.075.534           | 108.360.486            | 32.844.403        |
| ■ 1996 | 61%               | 14%                  | 19%                    | 6%                |
| ■ 1996 | 326.903.621       | 73.717.730           | 104.051.081            | 35.014.879        |

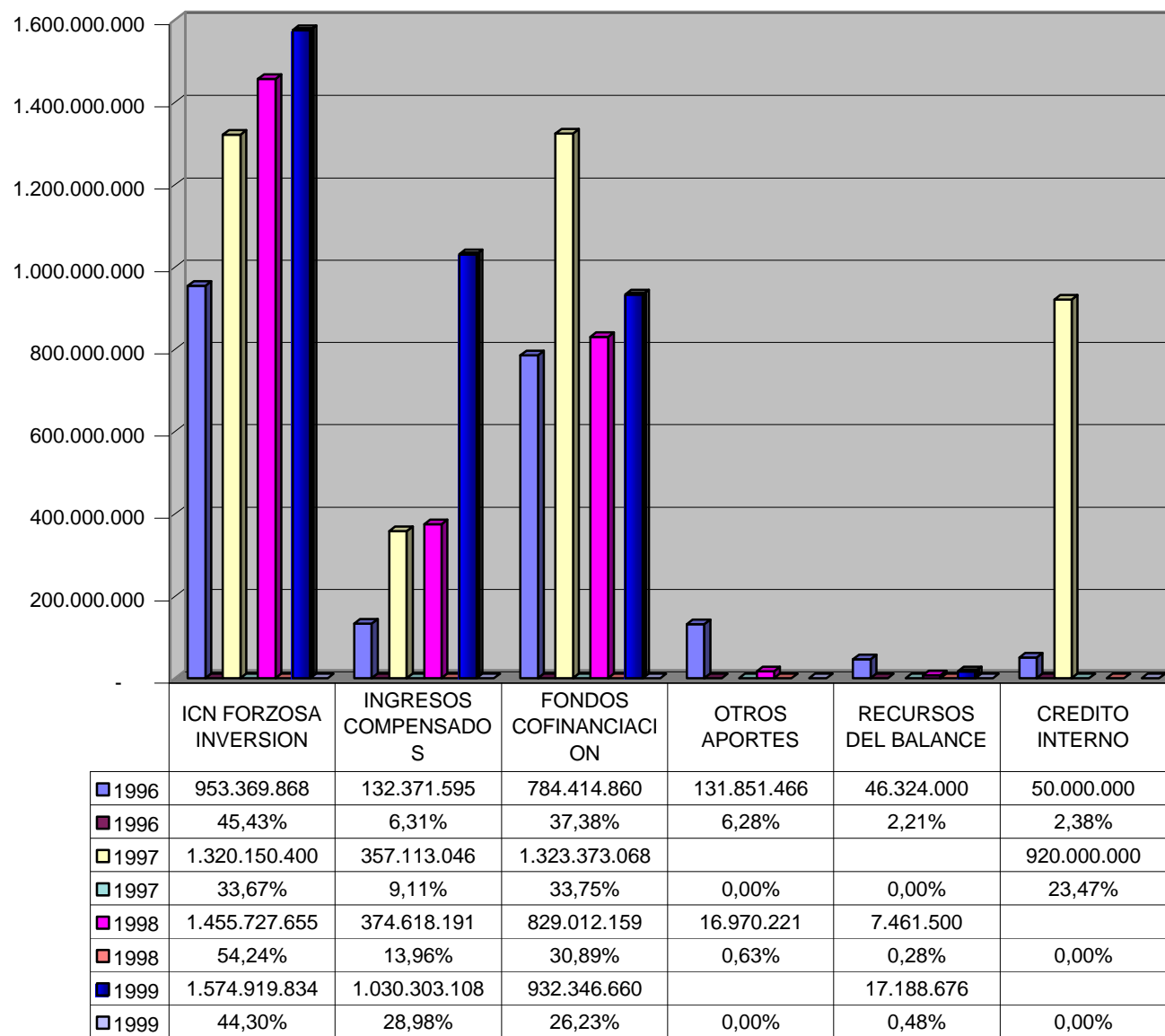
| PARTICIPACION INGRESOS TRIBUTARIOS<br>MUNICIPIO DEL SOCORRO |                    |             |                    |             |                    |             |                    |             |
|---|--------------------|-------------|--------------------|-------------|--------------------|-------------|--------------------|-------------|
|   | 1996               |             | 1997               |             | 1998               |             | 1999               |             |
| PREDIAL UNIFICADO   | 326.903.621        | 61%         | 358.550.140        | 61%         | 361.313.316        | 55%         | 408.597.827        | 57%         |
| INDUSTRIA Y COMERCIO  | 73.717.730         | 14%         | 88.075.534         | 15%         | 114.717.604        | 17%         | 131.664.231        | 18%         |
| CIRCULACION Y TRANSITO                                      | 104.051.081        | 19%         | 108.360.486        | 18%         | 127.664.154        | 19%         | 105.706.852        | 15%         |
| OTROS TRIBUTARIOS   | 35.014.879         | 6%          | 32.844.403         | 6%          | 52.541.797         | 8%          | 68.744.991         | 10%         |
| <b>TOTALES</b>  | <b>539.687.311</b> | <b>100%</b> | <b>587.830.563</b> | <b>100%</b> | <b>656.236.871</b> | <b>100%</b> | <b>714.713.901</b> | <b>100%</b> |

| PARTICIPACION INGRESOS CORRIENTES 1996 - 1999 |                      |             |                      |             |                      |             |                      |             |
|---|----------------------|-------------|----------------------|-------------|----------------------|-------------|----------------------|-------------|
|   | 1996                 |             | 1997                 |             | 1998                 |             | 1999                 |             |
| TRIBUTARIOS                                   | 539.687.311          | 48,82%      | 587.830.563          | 50,36%      | 656.236.871          | 50,90%      | 714.713.901          | 55,46%      |
| NO TRIBUTARIOS                                | 226.194.291          | 20,46%      | 262.278.256          | 22,47%      | 229.580.917          | 17,81%      | 220.061.424          | 17,08%      |
| LIBRE ASIGNACION ICN                          | 339.485.479          | 30,71%      | 317.247.110          | 27,18%      | 403.445.202          | 31,29%      | 353.936.487          | 27,46%      |
| <b>TOTALES</b>                                | <b>1.105.367.081</b> | <b>100%</b> | <b>1.167.355.929</b> | <b>100%</b> | <b>1.289.262.990</b> | <b>100%</b> | <b>1.288.711.812</b> | <b>100%</b> |

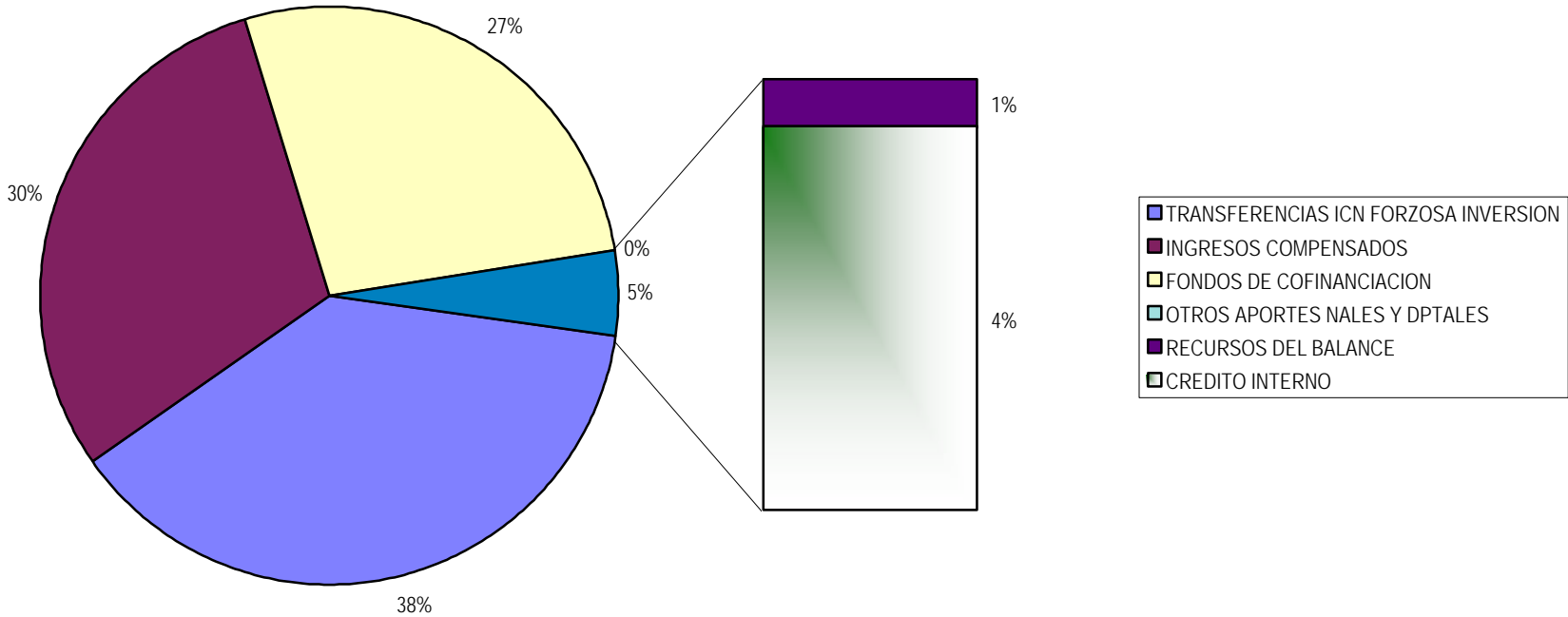
**MUNICIPIO DEL SOCORRO**

| PROYECCION PARTICIPACION INGRESOS TRIBUTARIOS MUNICIPIO SOCORRO 2000 - 2008 |                    |                |                    |                |                    |                |                    |                |
|---|--------------------|----------------|--------------------|----------------|--------------------|----------------|--------------------|----------------|
|   | 2000               |                | 2001               |                | 2002               |                | 2003               |                |
| PREDIAL UNIFICADO   | 430.416.951        | 57,17%         | 453.401.216        | 57,17%         | 477.612.841        | 57,17%         | 503.117.367        | 57,17%         |
| INDUSTRIA Y COMERCIO  | 138.695.101        | 18,42%         | 146.101.419        | 18,42%         | 153.903.235        | 18,42%         | 162.121.668        | 18,42%         |
| CIRCULACION Y TRANSITO  | 111.351.598        | 14,79%         | 117.297.773        | 14,79%         | 123.561.474        | 14,79%         | 130.159.657        | 14,79%         |
| OTROS TRIBUTARIOS   | 72.351.598         | 9,61%          | 76.215.173         | 9,61%          | 80.285.064         | 9,61%          | 84.572.286         | 9,61%          |
| <b>TOTALES</b>  | <b>752.815.248</b> | <b>100,00%</b> | <b>793.015.582</b> | <b>100,00%</b> | <b>835.362.614</b> | <b>100,00%</b> | <b>879.970.978</b> | <b>100,00%</b> |

### PARTICIPACION INGRESOS DE INVERSION O DE CAPITAL 1996 - 1999



PROYECCION PARTICIPACION INGRESOS INVERSION 2000 - 2008



[



**MUNICIPIO DEL SOCORRO**

**PARTICIPACION INGRESOS DE CAPITAL O DE INVERSION 1996 - 1999**

|                       | 1996                 |             | 1997                 |             | 1998                 |             | 1999                 |             |
|-----------------------|----------------------|-------------|----------------------|-------------|----------------------|-------------|----------------------|-------------|
| ICN FORZOSA INVERSION | 953.369.868          | 45,43%      | 1.320.150.400        | 33,67%      | 1.455.727.655        | 54,24%      | 1.574.919.834        | 44,30%      |
| INGRESOS COMPENSADOS  | 132.371.595          | 6,31%       | 357.113.046          | 9,11%       | 374.618.191          | 13,96%      | 1.030.303.108        | 28,98%      |
| FONDOS COFINANCIACION | 784.414.860          | 37,38%      | 1.323.373.068        | 33,75%      | 829.012.159          | 30,89%      | 932.346.660          | 26,23%      |
| OTROS APORTES         | 131.851.466          | 6,28%       |                      | 0,00%       | 16.970.221           | 0,63%       |                      | 0,00%       |
| RECURSOS DEL BALANCE  | 46.324.000           | 2,21%       |                      | 0,00%       | 7.461.500            | 0,28%       | 17.188.676           | 0,48%       |
| CREDITO INTERNO       | 50.000.000           | 2,38%       | 920.000.000          | 23,47%      |                      | 0,00%       |                      | 0,00%       |
| <b>TOTALES</b>        | <b>2.098.331.789</b> | <b>100%</b> | <b>3.920.636.514</b> | <b>100%</b> | <b>2.683.789.725</b> | <b>100%</b> | <b>3.554.758.278</b> | <b>100%</b> |

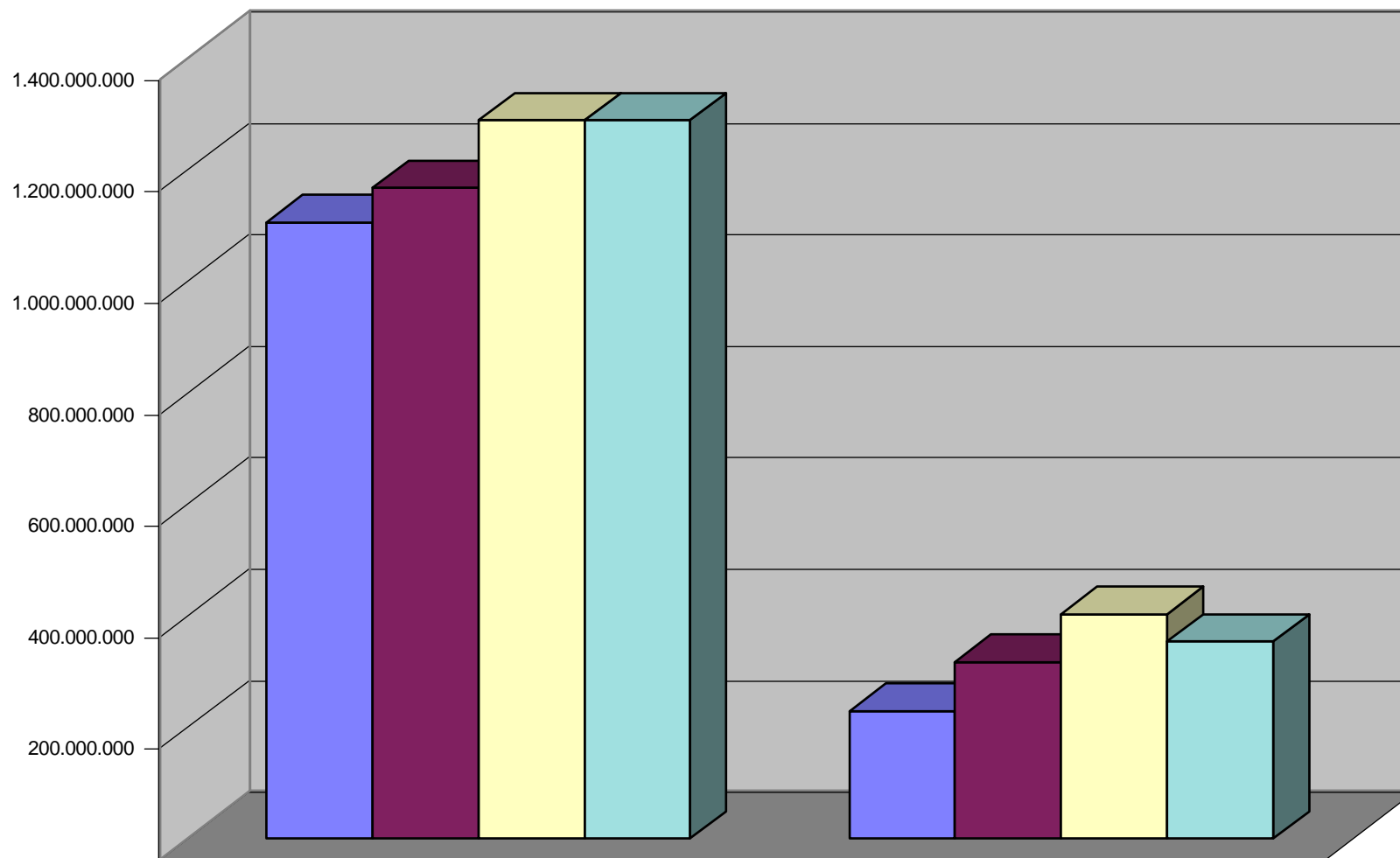


MUNICIPIO DEL SOCORRO

PROYECCION PARTICIPACION INGRESOS DE CAPITAL O DE INVERSION 2000 - 2008

|                                | 2000                 |             | 2001                 |             | 2002                 |             | 2003                 |             | 2004                 |             | 2005                 |             | 2006                 |             | 2007                 |             | 2008                 |             |
|--------------------------------|----------------------|-------------|----------------------|-------------|----------------------|-------------|----------------------|-------------|----------------------|-------------|----------------------|-------------|----------------------|-------------|----------------------|-------------|----------------------|-------------|
| TRANSFERENCIAS ICN FORZOSA INV | 1.373.819.699        | 37,97%      | 1.424.788.409        | 39,15%      | 1.477.648.059        | 38,68%      | 1.532.468.802        | 38,21%      | 1.589.323.395        | 37,74%      | 1.648.287.293        | 37,28%      | 1.709.438.752        | 36,81%      | 1.772.858.929        | 36,35%      | 1.838.631.996        | 35,89%      |
| INGRESOS COMPENSADOS           | 1.085.321.293        | 30,00%      | 1.143.277.450        | 31,41%      | 1.204.328.466        | 31,52%      | 1.268.639.606        | 31,63%      | 1.336.384.961        | 31,74%      | 1.407.747.918        | 31,84%      | 1.482.921.657        | 31,94%      | 1.562.109.673        | 32,03%      | 1.645.526.330        | 32,12%      |
| FONDOS DE COFINANCIACION       | 989.406.276          | 27,35%      | 1.049.957.940        | 28,85%      | 1.114.215.366        | 29,17%      | 1.182.405.346        | 29,48%      | 1.254.768.554        | 29,80%      | 1.331.560.389        | 30,12%      | 1.413.051.885        | 30,43%      | 1.499.530.660        | 30,75%      | 1.591.301.937        | 31,06%      |
| OTROS APORTES NALES Y DPTALES  |                      | 0,00%       |                      | 0,00%       |                      | 0,00%       |                      | 0,00%       |                      | 0,00%       |                      | 0,00%       |                      | 0,00%       |                      | 0,00%       |                      | 0,00%       |
| RECURSOS DEL BALANCE           | 19.251.317           | 0,53%       | 21.561.475           | 0,59%       | 24.148.852           | 0,63%       | 27.046.714           | 0,67%       | 30.292.320           | 0,72%       | 33.927.398           | 0,77%       | 37.998.686           | 0,82%       | 42.558.529           | 0,87%       | 47.665.552           | 0,93%       |
| CREDITO INTERNO                | 150.000.000          | 4,15%       |                      | 0,00%       |                      | 0,00%       |                      | 0,00%       |                      | 0,00%       |                      | 0,00%       |                      | 0,00%       |                      | 0,00%       |                      | 0,00%       |
| <b>TOTAL</b>                   | <b>3.617.798.585</b> | <b>100%</b> | <b>3.639.585.275</b> | <b>100%</b> | <b>3.820.340.743</b> | <b>100%</b> | <b>4.010.560.469</b> | <b>100%</b> | <b>4.210.769.230</b> | <b>100%</b> | <b>4.421.522.998</b> | <b>100%</b> | <b>4.643.410.979</b> | <b>100%</b> | <b>4.877.057.791</b> | <b>100%</b> | <b>5.123.125.814</b> | <b>100%</b> |

### NIVEL DEPENDENCIA INGRESOS CTES - ICN LIBRE ASIGNACION 1996 - 1999



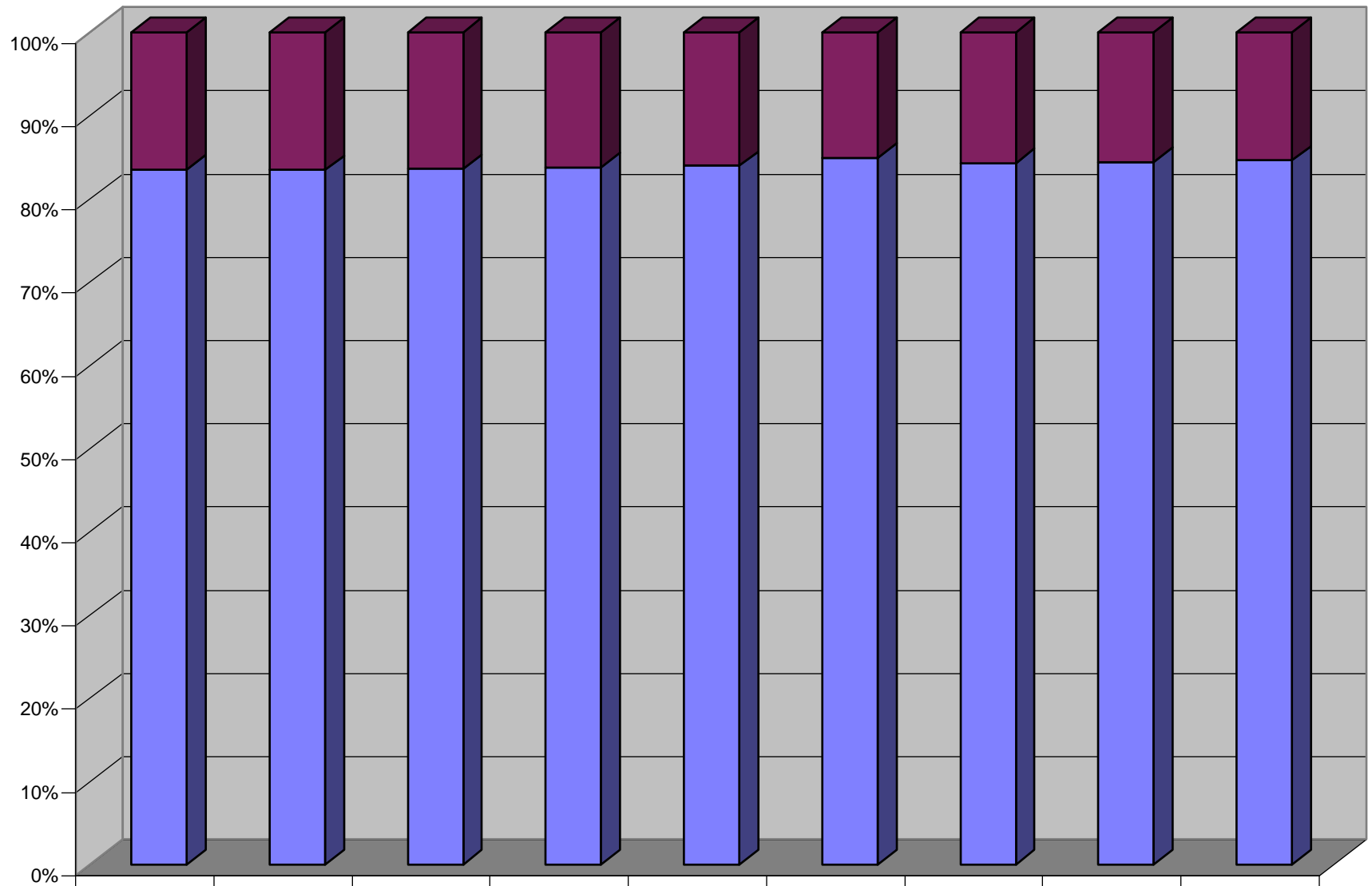
|               | INGRESOS CORRIENTES | ICN LIBRE ASIGNACION |
|---------------|---------------------|----------------------|
| ■ 1996 20,76% | 1.105.367.081       | 229.485.479          |
| ■ 1997 27,18% | 1.167.355.929       | 317.247.110          |
| ■ 1998 31,29% | 1.289.262.990       | 403.445.202          |
| ■ 1999 27,46% | 1.288.711.812       | 353.936.487          |

NIVEL DEP ING CTES - L.ASIG 199

NIVEL DE DEPENDENCIA DE LOS INGRESOS CORRIENTES CON RESPECTO A LOS INGRESOS  
CORRIENTES DE LA NACION - LIBRE ASIGNACION MUNICIPIO SOCORRO 1996 -2008

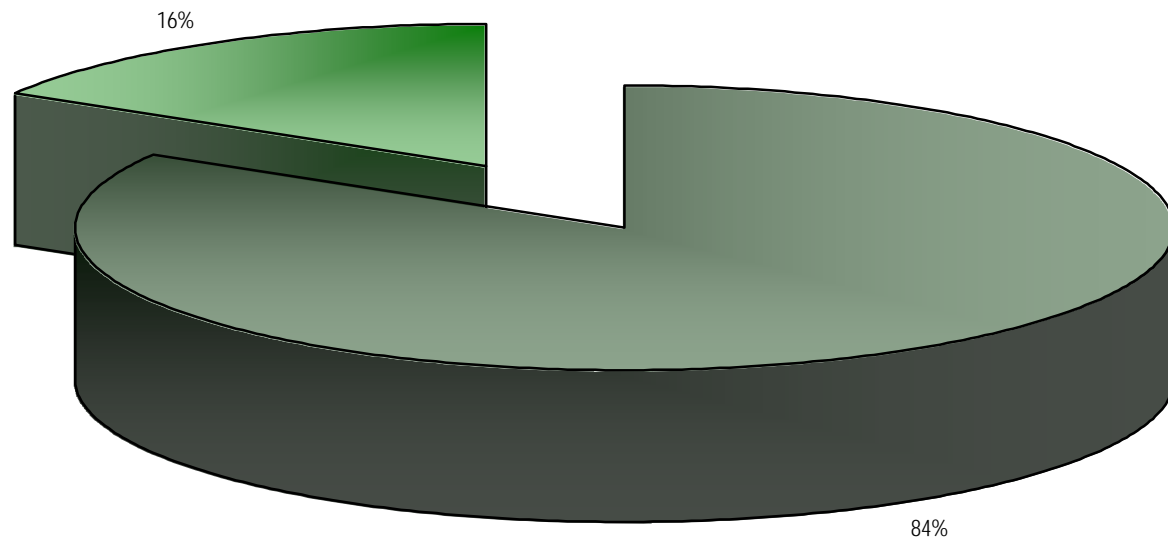
|                      | <b>1996</b>   | <b>1997</b>   | <b>1998</b>   | <b>1999</b>   |
|----------------------|---------------|---------------|---------------|---------------|
|                      | <b>20,76%</b> | <b>27,18%</b> | <b>31,29%</b> | <b>27,46%</b> |
| INGRESOS CORRIENTES  | 1.105.367.081 | 1.167.355.929 | 1.289.262.990 | 1.288.711.812 |
| ICN LIBRE ASIGNACION | 229.485.479   | 317.247.110   | 403.445.202   | 353.936.487   |

**PROYECCION NIVEL DEPENDENCIA INGRESOS CORRIENTES - L.ASIG. 2000 - 2008**



|                        | 2000          | 2001          | 2002          | 2003          | 2004          | 2005          | 2006          | 2007          | 2008          |
|------------------------|---------------|---------------|---------------|---------------|---------------|---------------|---------------|---------------|---------------|
| ■ ICN LIBRE ASIGNACION | 242.438.770   | 251.433.249   | 260.761.422   | 270.435.671   | 280.466.834   | 290.874.228   | 301.665.662   | 312.857.458   | 324.464.470   |
| ■ INGRESOS CORRIENTES  | 1.227.131.098 | 1.262.616.903 | 1.325.942.283 | 1.392.497.180 | 1.462.448.438 | 1.636.971.543 | 1.613.261.174 | 1.694.481.636 | 1.779.867.379 |

PROYECCION PARTICIPACION INGRESOS CTES - ICN LIBRE ASIGNACION 2000 - 2008

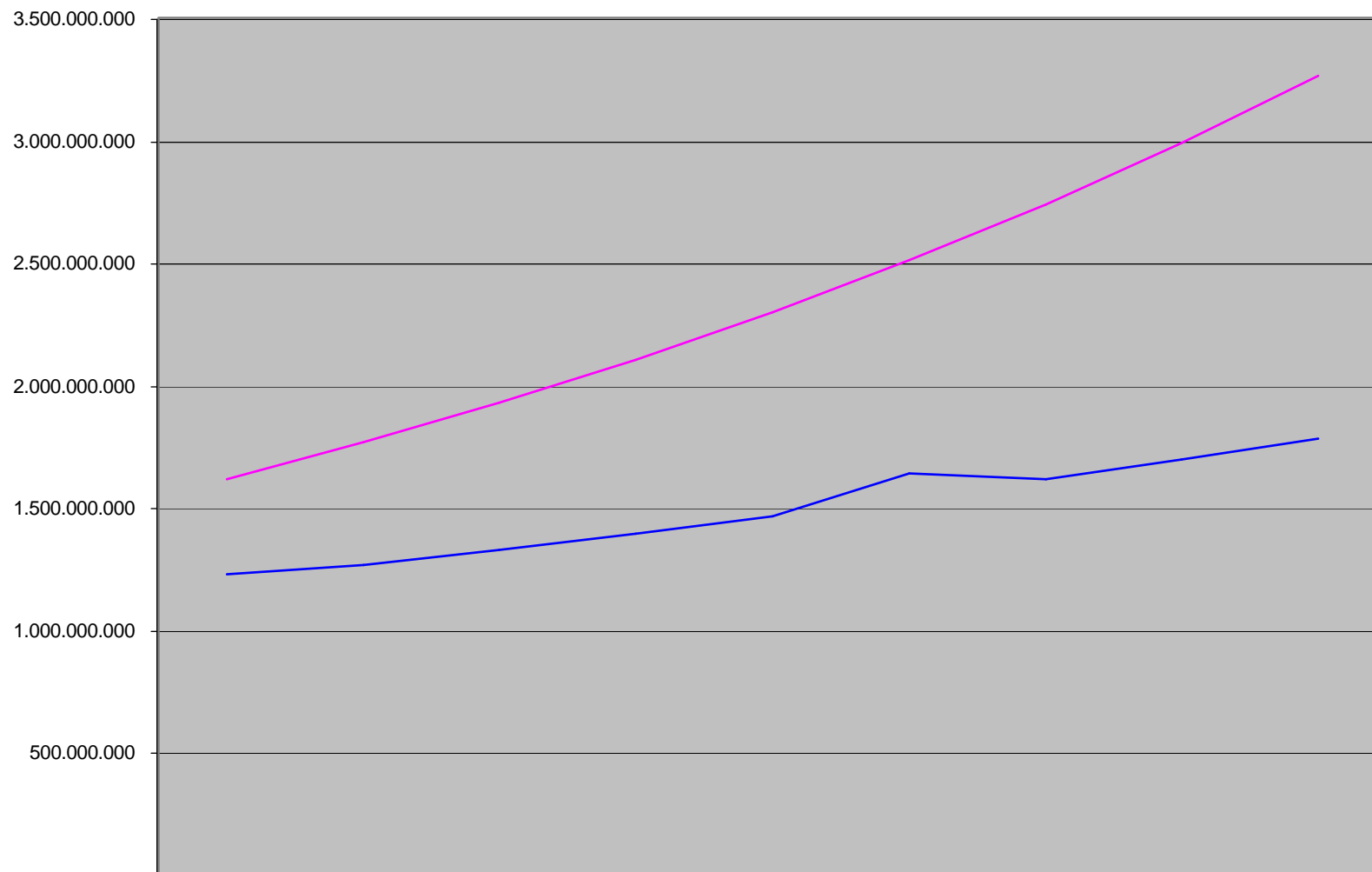


■ INGRESOS CORRIENTES ■ ICN LIBRE ASIGNACION

**NIVEL DE DEPENDENCIA DE LOS INGRESOS CORRIENTES CON RESPECTO A LOS INGRESOS  
CORRIENTES DE LA NACION - LIBRE ASIGNACION MUNICIPIO SOCORRO 2000 - 2008**

|                      | 2000          | 2001          | 2002          | 2003          | 2004          | 2005          | 2006          | 2007          | 2008          |
|----------------------|---------------|---------------|---------------|---------------|---------------|---------------|---------------|---------------|---------------|
|                      | 19,76%        | 19,91%        | 19,67%        | 19,42%        | 19,18%        | 17,77%        | 18,70%        | 18,46%        | 18,23%        |
| INGRESOS CORRIENTES  | 1.227.131.098 | 1.262.616.903 | 1.325.942.283 | 1.392.497.180 | 1.462.448.438 | 1.636.971.543 | 1.613.261.174 | 1.694.481.636 | 1.779.867.379 |
| ICN LIBRE ASIGNACION | 242.438.770   | 251.433.249   | 260.761.422   | 270.435.671   | 280.466.834   | 290.874.228   | 301.665.662   | 312.857.458   | 324.464.470   |

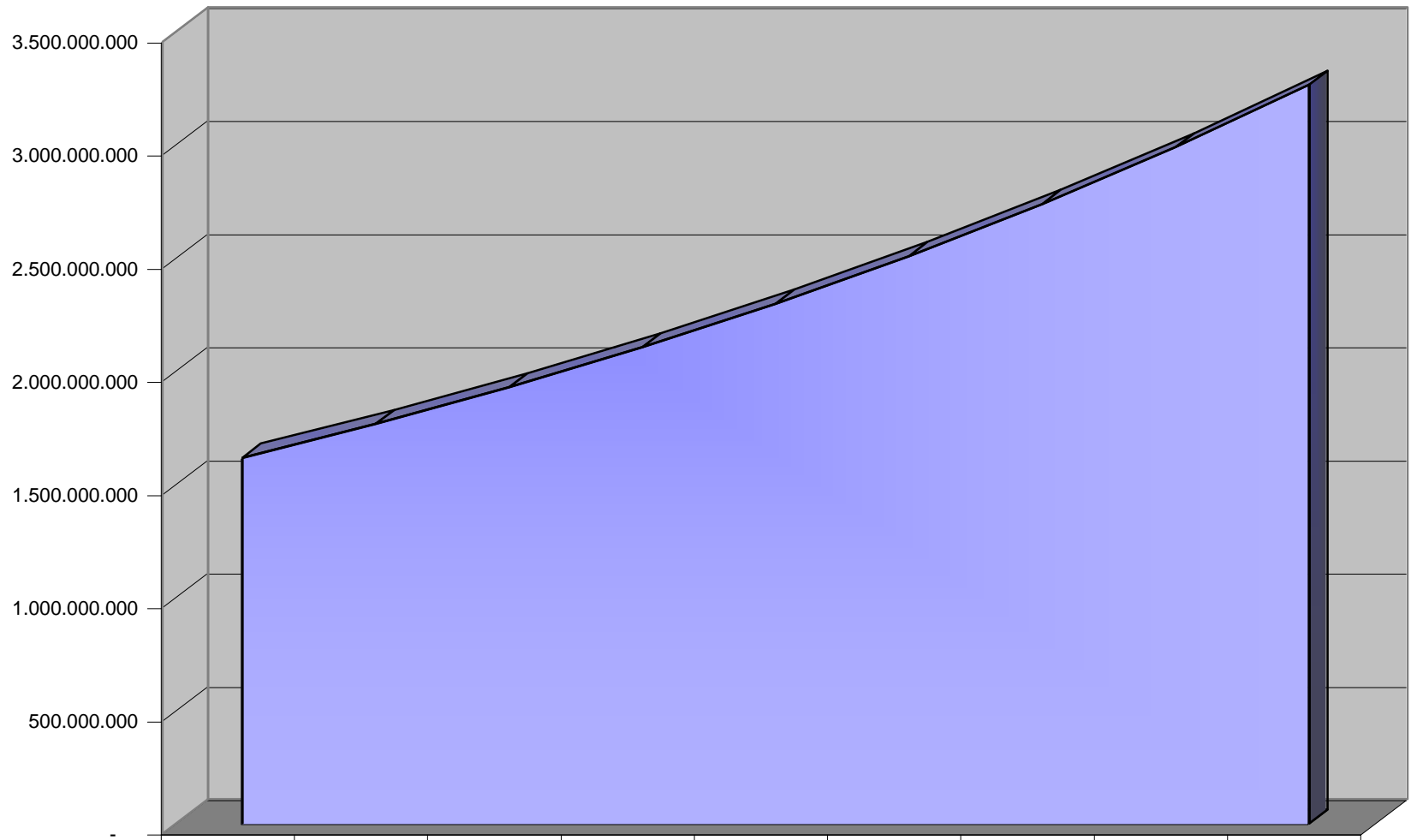
### RELACION DE INGRESOS Y GASTOS CORRIENTES MUNICIPIO SOCORRO 1996 - 2008



|                       | 2000          | 2001          | 2002          | 2003          | 2004          | 2005          | 2006          | 2007          | 2008          |
|-----------------------|---------------|---------------|---------------|---------------|---------------|---------------|---------------|---------------|---------------|
| — INGRESOS CORRIENTES | 1.227.131.098 | 1.262.616.903 | 1.325.942.283 | 1.392.497.180 | 1.462.448.438 | 1.636.971.543 | 1.613.261.174 | 1.694.481.636 | 1.779.867.379 |
| — GASTOS CORRIENTES   | 1.616.692.381 | 1.765.104.742 | 1.927.141.357 | 2.104.052.934 | 2.297.204.993 | 2.508.088.412 | 2.738.330.928 | 2.989.709.707 | 3.264.165.058 |

**VIGENCIAS**

### GASTOS CORRIENTES 1996 - 2008



|                     | 2000          | 2001          | 2002          | 2003          | 2004          | 2005          | 2006          | 2007          | 2008          |
|---------------------|---------------|---------------|---------------|---------------|---------------|---------------|---------------|---------------|---------------|
| ■ GASTOS CORRIENTES | 1.616.692.381 | 1.765.104.742 | 1.927.141.357 | 2.104.052.934 | 2.297.204.993 | 2.508.088.412 | 2.738.330.928 | 2.989.709.707 | 3.264.165.058 |



**MUNICIPIO DEL SOCORRO**

**RELACION DE INGRESOS Y GASTOS CORRIENTES MUNICIPIO SOCORRO  
2000 - 2008**

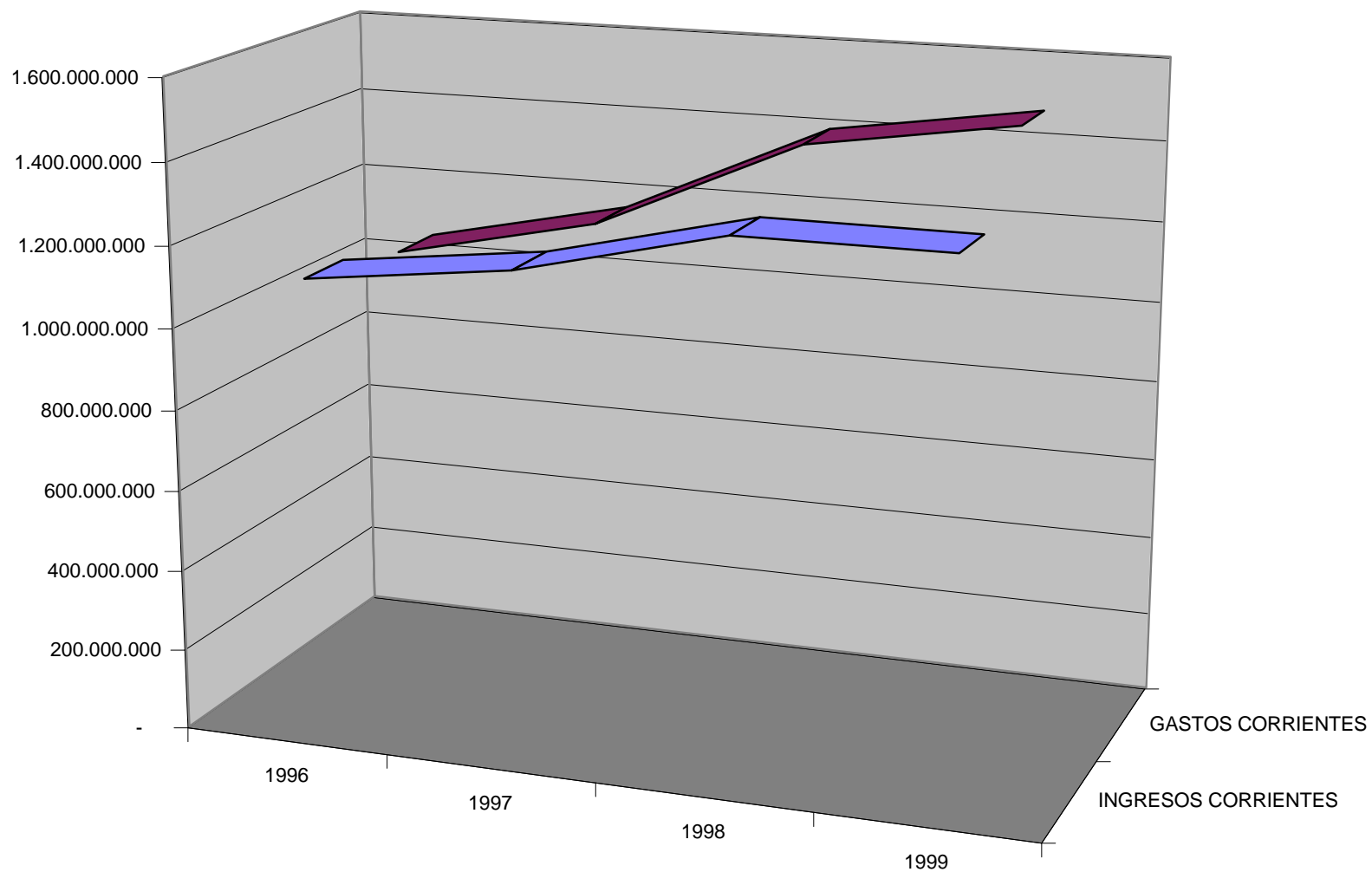
|                     | <b>2000</b>   | <b>2001</b>   | <b>2002</b>   | <b>2003</b>   | <b>2004</b>   | <b>2005</b>   | <b>2006</b>   | <b>2007</b>   | <b>2008</b>   |
|---------------------|---------------|---------------|---------------|---------------|---------------|---------------|---------------|---------------|---------------|
| INGRESOS CORRIENTES | 1.227.131.098 | 1.262.616.903 | 1.325.942.283 | 1.392.497.180 | 1.462.448.438 | 1.636.971.543 | 1.613.261.174 | 1.694.481.636 | 1.779.867.379 |
| GASTOS CORRIENTES   | 1.616.692.381 | 1.765.104.742 | 1.927.141.357 | 2.104.052.934 | 2.297.204.993 | 2.508.088.412 | 2.738.330.928 | 2.989.709.707 | 3.264.165.058 |

**MUNICIPIO DEL SOCORRO**

**GASTOS CORRIENTES O FUNCIONAMIENTO MUNICIPIO SOCORRO 1996 - 2008  
2000 - 2008**

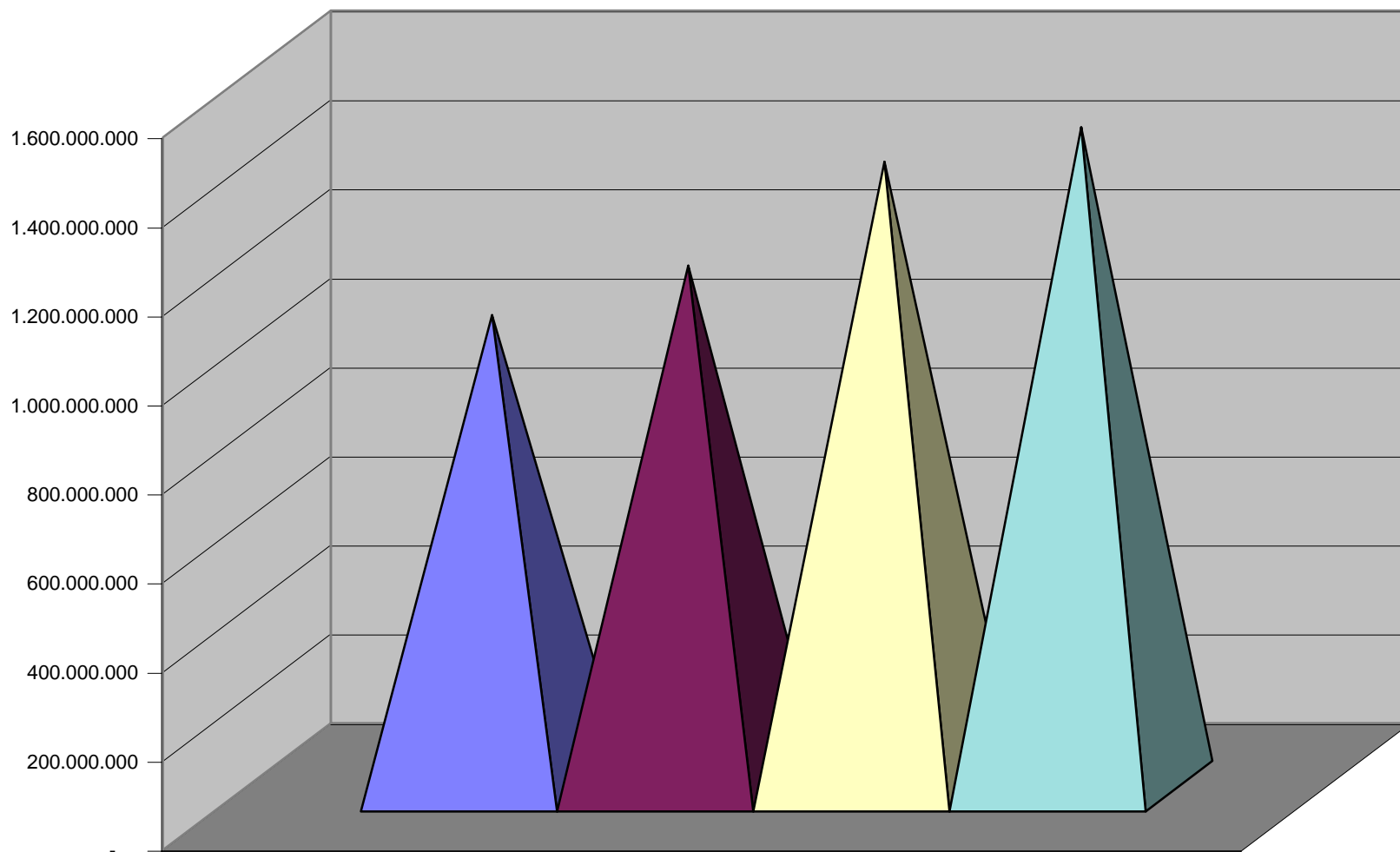
|                   | <b>2000</b>   | <b>2001</b>   | <b>2002</b>   | <b>2003</b>   | <b>2004</b>   | <b>2005</b>   | <b>2006</b>   | <b>2007</b>   | <b>2008</b>   |
|-------------------|---------------|---------------|---------------|---------------|---------------|---------------|---------------|---------------|---------------|
| GASTOS CORRIENTES | 1.616.692.381 | 1.765.104.742 | 1.927.141.357 | 2.104.052.934 | 2.297.204.993 | 2.508.088.412 | 2.738.330.928 | 2.989.709.707 | 3.264.165.058 |

### RELACION DE INGRESOS Y GASTOS CORRIENTES MUNICIPIO SOCORRO 1996 - 1999



|                       | 1996          | 1997          | 1998          | 1999          |
|-----------------------|---------------|---------------|---------------|---------------|
| ■ INGRESOS CORRIENTES | 1.105.367.081 | 1.167.355.929 | 1.289.262.990 | 1.288.711.812 |
| ■ GASTOS CORRIENTES   | 1.058.365.163 | 1.170.034.304 | 1.402.416.897 | 1.480.758.730 |

### GASTOS CORRIENTES MUNICIPIO SOCORRO 1996 - 1999



| GASTOS CORRIENTES |               |
|-------------------|---------------|
| ■ 1996            | 1.058.365.163 |
| ■ 1997            | 1.170.034.304 |
| ■ 1998            | 1.402.416.897 |
| ■ 1999            | 1.480.758.730 |

**RELACION DE INGRESOS Y GASTOS CORRIENTES MUNICIPIO SOCORRO**  
**1996 - 1999**

|                     | <b>1996</b>   | <b>1997</b>   | <b>1998</b>   | <b>1999</b>   |
|---------------------|---------------|---------------|---------------|---------------|
| INGRESOS CORRIENTES | 1.105.367.081 | 1.167.355.929 | 1.289.262.990 | 1.288.711.812 |
| GASTOS CORRIENTES   | 1.058.365.163 | 1.170.034.304 | 1.402.416.897 | 1.480.758.730 |

**GASTOS DE FUNCIONAMIENTO MUNICIPIO SOCORRO**  
**1996 - 1999**

|                   | <b>1996</b>   | <b>1997</b>   | <b>1998</b>   | <b>1999</b>   |
|-------------------|---------------|---------------|---------------|---------------|
| GASTOS CORRIENTES | 1.058.365.163 | 1.170.034.304 | 1.402.416.897 | 1.480.758.730 |